

Dance / Drill

March 15-17, 2018 * Veterans Memorial Coliseum * Portland



BEST TIRE VALUE PROMISE[®]



VALUE THAT GETS BETTER BY THE MILE.

OUR PROMISE INCLUDES

PEACE OF MIND TIRE PROTECTION

- If a Tire is Damaged Beyond Repair, We'll Replace its Value.
- We Guarantee Our Work for the Life of Your Tires.
- Free Pre-Trip Safety Checks

FREE LIFETIME TIRE & MILEAGE CARE

- Flat Tire Repairs
- Tire Rotations & Rebalancing
- Tire Pressure Checks
- Brake & Alignment Checks



Doing the right thing matters.[®]

OSAA / U.S. BANK / LES SCHWAB TIRES STATE CHAMPIONSHIPS



Welcome to the OSAA / U.S. Bank / Les Schwab Tires State Championships!

At the OSAA we believe high school activities provide opportunities for young people to receive a well-rounded education that challenges both mind and body. These opportunities enrich and expand our students' school experience and help them become contributing members of society.

Participation in activities teaches students how to be part of something bigger than themselves; the meaning of respect for themselves and others; and skills like grit, resilience, patience and the ability to collaborate with peers. They also learn how to fail and, more importantly, how to turn adversity into success through effort.

Congratulations to students, coaches, schools and communities who earned the right to participate in this state championship! And a special thanks to U.S. Bank and Les Schwab Tires for sharing our belief in the value of high school activities through their continued financial commitment. Together, we remain steadfast in our efforts to provide opportunities for students to experience these valuable lessons.

Thank you for your continued support of Oregon high school activities!

Peter Weber
Executive Director, OSAA



On behalf of U.S. Bank, welcome to today's Oregon School Activities Association state championship!

We believe in building strong communities where we live and work. One way we demonstrate this commitment in Oregon is by supporting OSAA programs, which promote leadership, teamwork and sportsmanship in young people. Since 1984, U.S. Bank has been proud to support the OSAA and its 290 member schools, with more than four million dollars in contributions to date.

We extend our congratulations to all of the participants, coaches, families and fans here today. We look forward to our continued partnership with you in support of Oregon's young people

Stacey Dodson
President, U.S. Bank
Portland and Southwest Washington



Welcome!

**Teamwork.
Responsibility.
Accomplishment.**

Whether students are shooting for the hoop, marching in time or aiming for the end zone, they are practicing skills that will serve them well in school, on the job and in life.

At Les Schwab Tire Centers, we are proud of the players and performers of the OSAA. We are also excited to celebrate our 16th year of being a title sponsor. We believe in supporting students as they learn about commitment, hard work and serving the community — values the company believes in.

Today, throughout the state there are 295 high schools serving over 160,000 students. These schools help provide valuable education for our youth both in and outside the classroom to help make Oregon a better place to live. Thank you for being here and for supporting our great young people.

Les Schwab, *Doing the right thing matters.*



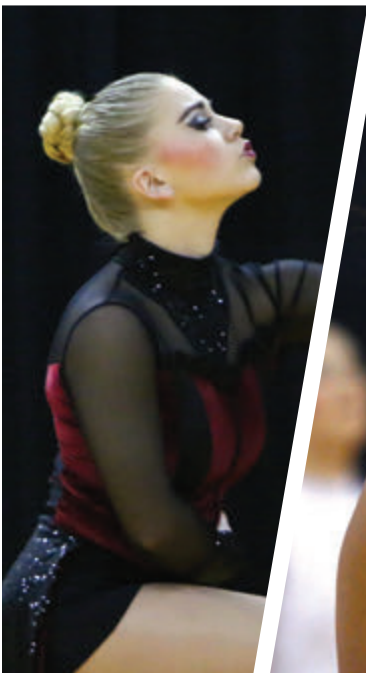


**WE BELIEVE
IN CHANGING MORE
THAN JUST TIRES.**



Our values aren't just something we talk about, they're something we act on. We are proud to be a title sponsor of the OSAA Dance/Drill State Championships! It's a great way for them to grow and learn the same sense of hard work and integrity that makes our state, and Les Schwab, strong.

www.LesSchwab.com



Doing the right thing matters.®



Kids who **play** grow
into healthy adults.

Proud sponsor of the OSAA



OSAA



25200 SW Parkway Avenue, Suite 1
Wilsonville, OR 97070-9616

www.osaa.org

About the OSAA

The OSAA is comprised of 290 member high schools representing more than 200 Oregon communities. A private non-profit, board-governed association, the OSAA is sanctioned by the Oregon State Board of Education and is a member of the National Federation of State High School Associations (NFHS).

It's History

The OSAA began in 1918 when administrators from 36 schools recognized a need for an organization to coordinate and regulate high school interscholastic competition. Thus the Oregon State High School Athletic Association was formed. The name was changed in 1947 to reflect the inclusion of activities outside of traditional athletics.

Mission Statement

The mission of the OSAA is to serve member schools by providing leadership and state coordination for the conduct of interscholastic activities, which will enrich the educational experiences of high school students. The OSAA will work to promote interschool activities that provide equitable participation opportunities, positive recognition and learning experiences to students, while enhancing the achievement of educational goals.

What the OSAA Does

Much like the NCAA at the collegiate level, the OSAA regulates the eligibility and competition of all high school students in the state. This includes everything from determining which league a school will compete in to sponsoring and administering state championships.

Funding

As a private, non-profit organization, the OSAA does not receive any state funding. Revenue is generated from three sources: school membership fees, state championship gate receipts and corporate sponsors.

OSAA Activities

The OSAA sponsors 116 state championships for students competing in 19 interscholastic activities:

Fall

Cross Country, Volleyball, Soccer, Football

Winter

Cheerleading, Wrestling, Swimming, Basketball, Dance/Drill

Spring

Speech, Solo Music, Choir, Band/Orchestra
Golf, Tennis, Track & Field, Softball, Baseball

EXECUTIVE BOARD



Don Grotting
Superintendent
David Douglas SD
6A



Mark Hannan (Pres.)
Principal
Silverton HS
5A



Krista Parent
Superintendent
South Lane SD
4A



Tim France
Principal
Willamina HS
3A



Jeff Clark (V.P.)
Principal
Oakland HS
2A



Jack Henderson
Superintendent
Dufur SD
1A



Mark Witty
Superintendent
Baker SD
6A/5A/4A At-Large



Heidi Sipe
Superintendent
Umatilla SD
3A/2A/1A At-Large



Sherry Duerst-Higgins
School Board
Lane County ESD
OSBA



Mark Horak
Athletic Director
West Linn HS
OADA



Mary Lou Boderman
Coordinator Music &
Drama
Salem-Keizer SD
Activities



John Beck
Coach
Crater HS
OACA



Jack Folliard
Executive Director
OAOA

**OREGON SCHOOL ACTIVITIES ASSOCIATION
2017-18 Delegate Assembly**

| DISTRICT | TERM EXP | | NAME | POSITION | SCHOOL / DISTRICT |
|--------------------------------------|----------|------|-----------------------|----------------------------|----------------------------|
| 6A-1 Portland Interscholastic League | 2020 | * | Brian Chatard | Principal | Wilson HS |
| 6A-2 Metro League | 2020 | **EB | Don Grotting | Superintendent | Beaverton SD |
| 6A-3 Mt. Hood Conference | 2019 | | Ken Richardson | Superintendent | David Douglas SD |
| 6A-4 Three Rivers League | 2018 | | Ken Bell | Principal | Sherwood HS |
| 6A-5 Greater Valley Conference | 2020 | ** | Susie Orsborn | Principal | West Albany HS |
| 6A-6 Southwest Conference | 2018 | ** | Russ Bolin | Administrator | Roseburg HS |
| 5A-1 Northwest Oregon Conference | 2018 | ** | Mark Pinder | Principal | Milwaukie HS |
| 5A-2 Mid-Willamette Conference | 2019 | **EB | Mark Hannan | Administrator | Silver Falls SD |
| 5A-3 Midwestern League | 2018 | | Kelly Bokn | District Athletic Director | Eugene SD |
| 5A-4 Intermountain Conference | 2020 | * | Mike McIntosh | Superintendent | Redmond SD |
| 5A-5 Columbia River Conference | 2019 | | Rich Polkinghorn | Principal | Hood River Valley HS |
| 4A-1 Cowapa League | 2020 | ** | Jim Jones | Principal | Scappoose HS |
| 4A-2 Tri-Valley Conference | 2018 | | Ryan Carpenter | Superintendent | Estacada SD |
| 4A-3 Far West League | 2020 | * | Andy Grzeskowiak | Superintendent | Siuslaw SD |
| 4A-4 Oregon West Conference | 2020 | * | Heidi Hermansen | Assistant Principal | Cascade HS |
| 4A-5 Sky-Em League | 2019 | | Curtiss Scholl | Superintendent | Sisters SD |
| 4A-6 Skyline Conference | 2020 | * | Erik Lathen | Principal | North Valley HS |
| 4A-7 Greater Oregon League | 2019 | EB | Mark Witty | Superintendent | Baker SD |
| 3A-1 Lewis & Clark League | 2019 | ** | Graden Blue | Principal | Rainier HS |
| 3A-2 West Valley League | 2018 | EB | Tim France | Principal | Willamina HS |
| 3A-3 PacWest Conference | 2020 | * | Cathy Emmert | Principal | Jefferson HS |
| 3A-4 Mountain Valley Conference | 2018 | ** | Tony Jones | Administrator | Coquille SD |
| 3A-5 Eastern Oregon League | 2018 | | Marie Shimer | Director of Ed Services | Morrow County SD |
| 3A-6 Southern Cascade League | 2020 | * | Rusty Zysett | Vice Principal | Lakeview HS |
| 2A-1 Northwest League | 2020 | * | Misty Wharton | Superintendent | Nestucca Valley SD |
| 2A-2 Tri-River Conference | 2020 | ** | David Plotts | Principal | Santiam HS |
| 2A-3 Mountain View Conference | 2018 | EB | Jeff Clark | Principal | Oakland HS |
| 2A-4 Sunset Conference | 2020 | * | Brandon Standridge | Assistant Principal | Bandon HS |
| 2A-5 Columbia Basin Conference | 2019 | | Matt Combe | Principal | Heppner HS |
| 2A-6 Wapiti League | 2018 | ** | Curt Shelley | Superintendent | John Day SD |
| 1A-1 The Valley 10 League | 2018 | | Mark Sherman | Vice Principal | Southwest Christian HS |
| 1A-2 Casco League | 2018 | ** | Adam Kronberger | Principal | Crosshill Christian School |
| 1A-3 Mountain West League | 2020 | * | Marc Thielman | Superintendent | Alsea SD |
| 1A-4 Skyline League | 2019 | | Scott Yakovich | Principal | North Douglas HS |
| 1A-5 Mountain Valley League | 2019 | ** | Steve Prock | Principal | Gilchrist HS |
| 1A-6 Big Sky League | 2019 | | Jim Smith | Principal | Wheeler HS |
| 1A-7 Old Oregon League | 2018 | ** | Lance Dixon | Superintendent | North Powder SD |
| 1A-8 High Desert League | 2020 | * | Kevin Purnell | Principal | Adrian HS |
| Oregon School Boards Assn | 2020 | *EB | Sherry Duerst-Higgins | School Board | Lane County ESD |
| Oregon Athletic Directors Assn | 2019 | EB | Mark Horak | Athletic Director | West Linn HS |
| Activities Advisory Committee | 2019 | EB | Mary Lou Boderman | Coord of Music/Drama | Salem-Keizer SD |
| Oregon Athletic Coaches Assn | 2020 | *EB | John Beck | Coach | Crater HS |
| Oregon Athletic Officials Assn | 2019 | EB | Jack Foliard | Executive Director | Officials Association |

* Newly elected ** Re-elected
(EB) OSAA Executive Board Member



October 17, 2017

#opreps

SUN DAY
MON DAY
TUES DAY
WEDNES DAY
THURS DAY
GAME DAY

Who's dominating? Who's a force to watch? Get the story on OREGONLIVE, with statewide high school sports coverage all week long.

Follow Oregon's top teams and student athletes with:

- ★ game previews and live coverage
- ★ player and team rankings
- ★ exclusive photos and videos
- ★ reader polls and more

And on Fridays, get the view from the field with in-depth reporting from our Game of the Week.

Catch This Week's Action:

OREGONLIVE.COM/prep

P•R•E•P
SPORTS

The Oregonian OREGONLIVE





Proud to be the Official Sports Apparel Company of the OSAA



OSAA STATE CHAMPION SHIRTS



AVAILABLE ONLINE

OFFICIAL State Championship Letter Jacket Award Patches.

If out of stock or specific past year is requested patches will be individually made please allow 3-4 weeks

Exclusively at



www.osaastore.com
www.sportsustore.com



CUSTOMER SERVICE 503-227-2051



NSP

**NORTHWEST
SPORTS
PHOTOGRAPHY**


**Proud to be the official
photographer of the
OSAA Dance & Drill
State Championships**

**Please visit
our onsite
photo booth
to view your
Action & Team
Photos**

**Action, Team, and Awards
photos will be available for
viewing and purchase at**

www.4nsp.com

1-800-446-5758

 Find us on
Facebook

 Follow Us On
twitter

OSAA Dance & Drill State Championship Staffing Information



OSAA Staff

Kyle Stanfield
Brad Garrett

Competition Committee

Christine Andersen
Debbie Bujanski
BJ Cerny
Jennifer Chaffee
Amanda GaVette
Denise Harris
Trisha Herndon
Pat Keaveny
Peggy Schlegel
Kendall Shepherd

Competition Staff

Kevin Flink - Public Address
Kristin Alarcon - Tabulation
David Ediger - Sound/Music
Kayla Nordlum - Media/IT
Ivanna Tucker - Media/IT
BJ Cerny - Rehearsal
Pat Keaveny - Rehearsal
Colleen Martin - Rehearsal
Marlena Nunley - Rehearsal
Allison Ziarnik - Judges Assistant
Ivanna Tucker - Judges Assistant
Criss Burgess - Drill Down
Laurie Van Alstyne - Drill Down



Board of Directors

Jennifer Chaffee
Hayley DuLong
Amanda Estes
Amanda GaVette
Marlena Nunley
Jan Phaigh
Sue Robertson
Liisa Stockbridge
Jennifer Wilson

All-State Staff

DIRECTORS

Liisa Stockbridge

CHOREOGRAPERS

Alyssa Maslen
Jenelle Yarborough
Erin Zintek

JUDGES

Lara Haney
Carie King
Shammra Lacy
Alyssa Maslen
Kristen Meyers-Coverstone
Michele Napier
Maria Tucker

TABULATORS

Kristin Alarcon
Christie Rivas



Judges Director

Hayley Kimble

Performance Judges

Jennifer Berry
Ally Britton
Kristen Coverstone
Denise Danielson
Karissa Dean
Cher Keller
Julie Kelley
Carie King
Ashley Lorshbough
Malia Martin
Roshny Martuscelli
Jolene McGee
Michele Napier
Danielle Schneider
Tami Smith
Ashley Teixeira
Allison Ziarnik

Technical Judges

Gwen Dilkes
Allison Evans
Ann Finch
Jan Phaigh
Terry Shankle
Danika Streater
Courtney Wells



PACIFIC OFFICE
AUTOMATION

— PROBLEM SOLVED —

FOR OVER 35 YEARS

LOCALLY OWNED,

NATIONALLY RECOGNIZED

OUR PEOPLE MAKE TECHNOLOGY WORK.

Document management, IT services, printers & multifunction products, and more for your digital success

Pacific Office Automation
14747 NW Greenbrier Parkway
Beaverton, OR 97006

(888) 896-9029
pacificoffice.com



SHARP®



OSAA / U.S. Bank / Les Schwab Tires
2018 DANCE AND DRILL STATE CHAMPIONSHIPS
 March 15-17, 2018
 Veterans Memorial Coliseum, 300 Winning Way Portland, OR 97208



Thursday, March 15, 2018 Performance Order
Divisions: 5A, Show

| Division | Team | Rehearsal Time | Room | Show Load In Time / Staging End | Estimated Performance Time (pm) |
|-------------|------------------|----------------|------|---------------------------------|---------------------------------|
| 5A | Woodburn | 1:40pm | | | 5:10 |
| Show | Putnam | 10:54am | | South / 8:00am | 5:18 |
| Show | Philomath | 8:46am | | North / 7:00am | 5:33 |
| 5A | Bend | 1:50pm | | | 5:41 |
| 5A | North Eugene | 2:00pm | | | 5:50 |
| Show | Reynolds | 9:02am | | South / 5:45am | 6:00 |
| Show | Glencoe | 9:18am | | North / 7:15am | 6:15 |
| 5A | Silverton | 2:10pm | | | 6:23 |
| 5A | Lebanon | 2:20pm | | | 6:32 |
| Show | Parkrose | 9:34am | | South / 6:00am | 6:42 |
| Show | Cleveland | 9:50am | | North / 7:30am | 6:57 |
| 5A | South Albany | 2:30pm | | | 7:06 |
| 5A | Wilsonville | 2:40pm | | | 7:15 |
| Show | Grant | 10:06am | | South / 6:15am | 7:25 |
| Show | West Linn | 10:22am | | North / 7:45am | 7:40 |
| 5A | Hermiston | 2:50pm | | | 7:48 |
| 5A | Milwaukie | 3:00pm | | | 7:56 |
| Show | Clackamas | 10:38am | | South / 6:30am | 8:06 |
| Show | Canby | 8:30am | | North / 5:30am | 8:21 |
| 5A | Thurston | 3:10pm | | | 8:30 |
| 5A | Pendleton | 3:20pm | | | 8:38 |
| Show | Stayton | 11:10am | | South / 6:45am | 8:48 |

Thursday, March 15 load in times will be between 5:45am and 8am. Each team will be given 15 minutes to unload.



OSAA / U.S. Bank / Les Schwab Tires
2018 DANCE AND DRILL STATE CHAMPIONSHIPS
March 15-17, 2018
Veterans Memorial Coliseum, 300 Winning Way Portland, OR 97208



Friday, March 16, 2018 Performance Order

Divisions: 6A, 4A/3A/2A/1A

| Division | Team | Rehearsal Time | Room | Estimated Performance Time (pm) |
|--------------------|-----------------|----------------|------|---------------------------------|
| 6A | Newberg | 7:30am | | 5:10 |
| 6A | Liberty | 7:40am | | 5:18 |
| 4A/3A/2A/1A | Sweet Home | 7:50am | | 5:23 |
| 6A | South Medford | 8:00am | | 5:28 |
| 6A | South Salem | 8:10am | | 5:36 |
| 6A | Roosevelt | 8:20am | | 5:44 |
| 4A/3A/2A/1A | Grant Union | 8:30am | | 5:49 |
| 6A | David Douglas | 8:40am | | 5:54 |
| 6A | Benson | 8:50am | | 6:02 |
| 4A/3A/2A/1A | Amity | 9:00am | | 6:07 |
| 6A | Centennial | 9:10am | | 6:13 |
| 6A | Century | 9:20am | | 6:21 |
| 4A/3A/2A/1A | Scappoose | 9:30am | | 6:26 |
| 6A | Oregon City | 9:40am | | 6:31 |
| 6A | Willamette | 9:50am | | 6:39 |
| 6A | West Albany | 10:00am | | 6:47 |
| 4A/3A/2A/1A | Marshfield | 10:10am | | 6:52 |
| 6A | Lincoln | 10:20am | | 6:57 |
| 6A | Sheldon | 10:30am | | 7:05 |
| 4A/3A/2A/1A | Estacada | 10:40am | | 7:10 |
| 6A | Sunset | 10:50am | | 7:15 |
| 6A | Lakeridge | 11:00am | | 7:23 |
| 4A/3A/2A/1A | Astoria | 11:10am | | 7:28 |
| 6A | Barlow | 1:30pm | | 7:33 |
| 6A | Sprague | 1:40pm | | 7:41 |
| 4A/3A/2A/1A | Valley Catholic | 1:50pm | | 7:46 |
| 6A | Westview | 2:00pm | | 7:51 |
| 6A | Gresham | 2:10pm | | 7:59 |
| 4A/3A/2A/1A | Crook County | 2:20pm | | 8:04 |
| 6A | Lake Oswego | 2:30pm | | 8:09 |
| 6A | Tigard | 2:40pm | | 8:17 |
| 4A/3A/2A/1A | Gladstone | 2:50pm | | 8:22 |
| 6A | Tualatin | 3:00pm | | 8:27 |
| 6A | Sherwood | 3:10pm | | 8:35 |

AMITY

WARRIOR BEAT

Amity High School

Location Amity
Classification 3A
Colors Royal Blue, White
Superintendent Jeff Clark
Principal Chris Daniels
Athletic Director Derek Barnett
Activities Director Kimi Romey
Head Coach Syndie Rider
Routine Theme You're not in this alone
Music Selection "Warrior", Demi Lovato



| | | | |
|-----------------|----|----------------|----|
| C Amy Kraemer | 12 | Travis Berrier | 10 |
| C Beca Oldfield | 12 | Carlie Steele | 9 |
| C Emily Maples | 12 | | |
| Bekah Safranski | 11 | | |
| Kayla Norwood | 11 | | |
| Beth Oldfield | 10 | | |

ASTORIA

PIZZAZZ

Astoria High School

Location Astoria
Classification 4A
Colors Purple, Gold
Superintendent Craig Hoppes
Principal Lynn Jackson
Athletic Director Howard Rub
Activities Director Kevin Goin
Head Coaches Kelly Eckstein
 Emily Madsen
Team Managers Kelly Eckstein
 Emily Madsen
Choreographer Emily Madsen
Music Selection "I Will Wait", Julie Harriman



| | | | |
|---------------------|----|----------------|---|
| C Maia Mahoney | 12 | Makenzie Brady | 9 |
| C Nara Van De Grift | 11 | Sheila Doyle | 9 |
| Aliyah Grant | 10 | | |
| Elizabeth Varner | 10 | | |
| Liberty Olsen | 10 | | |
| Isabella Clement | 9 | | |

BARLOW

BRUNETTES

Barlow High School

Location Gresham
Classification 6A
Colors Blue, Gold
Superintendent Dr. Katrise Perera
Principal Bruce Schmidt
Athletic Director Greg Kelley
Activities Director Dan Dalzell
Head Coach April Anderson
Team Manager Monica Camacho
Choreographer Taryn Jansen
Routine Theme Beautiful Imperfections
Music Selection "Lung", Vancouver Sleep Clinic



| | | | | | | | |
|---------------------|----|-------------------|----|-------------------|---|------------------|---|
| C Aileen Lor | 12 | Sarah Kim | 11 | Hailey Muffenbier | 9 | McKenna VanVleck | 9 |
| C Cara Farnes | 12 | Sarah Mickle | 11 | Isabella Stoker | 9 | Teiyona Walker | 9 |
| C Vivian Seet-Jones | 12 | Chloe Buddeau | 10 | Jailynn Seet | 9 | | |
| Haley Bartley | 11 | C Madeline Hacker | 10 | Josefina Cruz | 9 | | |
| Nicolina Williams | 11 | Brittany Austin | 9 | Lexi Blevens | 9 | | |
| Sadie Peckham | 11 | Emilee Vazquez | 9 | Mariana Cortes | 9 | | |

BEND

ALTITUDES

Bend Senior High School

Location Bend
Classification 5A
Colors Navy, Gold

Superintendent Shay Mikalson
Principal Christopher Reese
Athletic Director Dave Williams
Activities Director Mackenzie Groshong

Head Coach GraceAnne Henshaw
Assistant Coaches Jenny Rake
 Roo Marina
 Haleigh Gilcrest

Team Manager Abby Nichols
Choreographer Haleigh Gilchrist

Routine Theme Revolution of Change
Music Selections "Talkin' bout a Revolution", Tracy Chapman
 "Burning Gold", Christina Perri



| | | | | | |
|-------------------|----|-------------------------|----|----------------|---|
| Brianna Rhees | 12 | C Marissa Sanchez | 11 | Haley Schmidt | 9 |
| C Kimberly Bailey | 12 | Natalie Kemnitz | 11 | Joana Guzman | 9 |
| C Sara Schmidt | 12 | Patricia Chavira Grever | 11 | Kaelin Frick | 9 |
| Brook Beauvais | 11 | Katelyn Seaverns | 10 | Kailea Fairham | 9 |
| Courtney Pringle | 11 | Leanne Marca | 10 | Taryn Hanson | 9 |
| Maggie Lewis | 11 | Nicole Burrus | 10 | | |

BENSON

THE TECHNIQUE

Benson High School

Location Portland
Classification 6A
Colors Orange, Royal Blue

Principal Curtis Wilson Jr.
Athletic Director Scott Archer

Head Coach Karissa Dean
Assistant Coach Jestine Plata DeValle
Choreographers Synergy LLC
 Karissa Dean

Routine Theme The Wolves
Music Selection "Running with the Wolves", Auroa



| | | | |
|------------------|----|-----------------------|----|
| Abby Key | 11 | Hallen Kanten | 11 |
| Aidan Van Duinen | 11 | Lana Senten | 11 |
| Andrea Darke | 11 | Maggie Angulo Galicia | 11 |
| Arlette Torres | 11 | Nathan Berres | 11 |
| Carmen Brown | 11 | Cheyenne Thao | 9 |
| Else Knudsen | 11 | Tory Norton | 9 |

CANBY

COUGAR DANCERS

Canby High School

Location Canby
Classification 6A
Colors Navy, Vegas Gold

Superintendent Trip Goodall
Principal Greg Dinse
Athletic Director Mark Martens

Head Coach Jennifer Chaffee
Assistant Coaches James Healey
 Jenna Gilmour
 Zackary Rood

Team Manager Abigail Chaffee
Choreographer James Healey

Routine Theme Paradigm
Music Selection "Rain, In Your Black Eyes", Ezio Bosso



| | | | | | | | | | |
|-------------------|----|--------------------|----|-------------------|----|------------------|----|----------------|---|
| C Amanda Stephens | 12 | Bailey Moore | 11 | Kaity VanHoose | 11 | Natalie Cobb | 10 | Cassidy Phelps | 9 |
| C Josie Sheveland | 12 | Bryn Baker | 11 | Lauren Gile | 11 | Rachel Hansen | 10 | Ellie Moore | 9 |
| Kyra Renner | 12 | Chanelle Myers | 11 | Yesenia Hernandez | 11 | Ainsley Beck | 9 | Emma Lawless | 9 |
| C Lauren Gerig | 12 | Dalton Sherrill | 11 | Alison Bighouse | 10 | Amethyst Palmer | 9 | Sarah Patton | 9 |
| Lola Rollins | 12 | Dani DeGraw | 11 | Kaitlin Gartrell | 10 | Avery Moyes | 9 | Sophie Reed | 9 |
| C Taylor Smith | 12 | Kaitlyn Sunderland | 11 | Kylee Hasty | 10 | Carmella Verkest | 9 | | |

CENTENNIAL

HI C'S

Centennial High School

Location Gresham
Classification 6A
Colors Scarlet, Columbia Blue

Superintendent Dr. Paul Coakley
Principal Mairi Scott-Aguirre
Athletic Director Brent Child
Activities Director Jimmy Mei

Head Coach Anne Ellett
Assistant Coaches Lynne McEachern
 Rhonda Wilson
Choreographers Rhonda Wilson
 Lynne McEachern

Routine Theme Rise
Music Selections "Prodigy", Nathan Lanier
 "Rise", Katy Perry



| | | | | | | | |
|-------------------|----|--------------|----|------------------|----|-----------------------|----|
| C Gianna Basile | 12 | Joli Wolf | 11 | Alexus Xiong | 10 | Kayla | 10 |
| C Muang Hoih | 12 | Kelly Tran | 11 | Ariana Alvarez | 10 | Rattanapaibooncharoen | 10 |
| C Theresa Mai | 12 | Leah Song | 11 | Christa Pierik | 10 | Addi Schuette | 9 |
| Beah Marie Marzan | 11 | Maddy Kalas | 11 | Hailey Rosenblad | 10 | Cing Muang | 9 |
| Chloe Weissenfluh | 11 | Natalie Sato | 11 | Janine Li | 10 | Ruby Tran | 9 |
| Jael Calloway | 11 | Peoni Cha | 11 | Jayley Kappes | 10 | Sofia Cing | 9 |

CENTURY

JAGZ DANCERS

Century High School

Location Hillsboro
Classification 6A
Colors Black, Teal, Silver

Superintendent Mike Scott
Principal Martha Guise
Athletic Director Dennis Rice
Activities Director Julie Kasper

Head Coach Liisa Stockbridge
Assistant Coach Nina Blosl

Routine Theme Heroes Never Die
Music Selection "Heroes Never Die", Dave Chappell



| | | | |
|--------------------|----|-----------------|----|
| C Alyssa Hernandez | 11 | Jordan Hall | 10 |
| C Crystal Coreas | 11 | Anneliese Canas | 9 |
| Emily Hernandez | 11 | Brissa Santana | 9 |
| Janine Moua | 11 | Carolina Chavez | 9 |
| Linda Monterroso | 11 | Clara Yarbrough | 9 |
| C Rebeca Garcia | 11 | | |

CLACKAMAS

CAVALETTES

Clackamas High School

Location Clackamas
Classification 6A
Colors Red, Black

Superintendent Matt Utterback
Principal Tammy O'Neill
Athletic Director Vicki Nelms
Activities Director Manuel Martinez

Head Coach Sue Anne Williams
Assistant Coaches Brandy Guthery
 Kurt Jull
 Alexis Winterhalter
Choreographers Jenn Livengood
 Brandy Guthery
 Jen Livengood

Routine Theme Untethered
Music Selection "No Roots", Alice Merton



| | | | | | | | | | |
|------------------|----|-------------------|----|------------------|----|----------------|----|----------------------|----|
| C Abby Gorton | 12 | C Sydney Houston | 12 | Megan Sizemore | 11 | Sophia DiNucci | 11 | Hailey Dickerson | 10 |
| Ellie Bray | 12 | Ellie Low | 11 | Molly Nagel | 11 | Sydney Johnson | 11 | Ashlin Harding | 9 |
| C Emilee Naranjo | 12 | Janessa Macy-West | 11 | Morgan Fowler | 11 | Avery Birch | 10 | Marcella Christenson | 9 |
| Kailey Maciokas | 12 | Kaitlyn Lingo | 11 | Nicole Gelow | 11 | Brinley Patton | 10 | Patricia Chin | 9 |
| Peyton Llewellyn | 12 | Kaitlyn Serverson | 11 | Penny Boddington | 11 | Elli Strauss | 10 | Sammy Maciokas | 9 |
| C Sidney Tran | 12 | Makeana Johnson | 11 | Sophia Collacchi | 11 | Emma Bancroft | 10 | Tia Atkinson | 9 |

CLEVELAND

DANCE TEAM

Cleveland High School

Location Portland
Classification 6A
Colors Kelly Green, Yellow

Principal Ayesha Freeman
Athletic Director Nathan G Stanley
Activities Director Eric Mirsepassi

Head Coach Coral Burgess
Assistant Coaches Ana Reiser
 Crystal Haneberg
 Criss Haneberg
Team Manager Ana Reiser
Choreographers Coral Burgess

Routine Theme Revival
Music Selections "Forest", Grant Burgess
 "Fire", Grant Burgess
 "Revival", Grant Burgess



| | | | | | | | |
|------------------|----|-------------------|----|-----------------|----|------------------|---|
| C Christine Zhan | 12 | Zachary Smith | 12 | Rebecca Nguyen | 10 | Tallula Wynia | 9 |
| C Drew Cooksey | 12 | Bree Jorgenson | 11 | Aline Chercover | 9 | Veronica Svobodd | 9 |
| C Kelsey Chan | 12 | C Chloe Gustafson | 11 | Hannah Crouser | 9 | | |
| Lily Gilmore | 12 | Connor Carr | 11 | Isabel Patton | 9 | | |
| Peyton Hamilton | 12 | Moira Burkhart | 11 | Lena Lovett | 9 | | |
| Samantha Davis | 12 | Kaitlyn Barnack | 10 | Stella Burden | 9 | | |

CROOK COUNTY

THE SPARKLES

Crook County High School

Location Prineville
Classification 4A
Colors Blue, Gold

Superintendent Dr. Duane Yecha
Principal Michelle Jonas
Athletic Director Rob Bonner
Activities Director Donny Jackson

Head Coach Amanda Estes
Choreographer Amanda Estes

Routine Theme Heartstrings
Music Selection "Believe", Madilyn Bailey



| | | | |
|-----------------|----|------------------|----|
| Kaitlyn Nixon | 12 | Rebecca Reed | 11 |
| Mataya Barber | 12 | Kara Hurt | 10 |
| Payton Ryan | 12 | Taylor Hordichok | 10 |
| Tiffany Goodwin | 12 | Hannah Teague | 9 |
| Victoria Bates | 12 | Justise Abbas | 9 |
| Dusk Landis | 11 | | |

DAVID DOUGLAS

SCOTTISH TAMS

David Douglas High School

Location Portland
Classification 6A
Colors Scarlet, Gray

Superintendent Ken Richardson
Principal John Bier
Athletic Director Greg Carradine
Activities Director Amber Cowgill

Head Coach Lindsey Hobbs
Assistant Coach Sarah Fulford
Team Manager Lupita Inzunza-Contreras
Choreographers Mary Fakhoury
 Lucy Garcia

Routine Theme It Gets Better
Music Selection "It Gets Better", Todrick Hall



| | | | | | | | |
|-------------------|----|----------------|----|-------------------|----|---------------------|---|
| C Hailey Kerkes | 12 | Lillian DoVale | 11 | Tina Empleo | 10 | Patricia Dusabimana | 9 |
| C Mariah Howard | 12 | C Kim Truong | 10 | Angel Gambrel | 9 | Sasha Selva | 9 |
| C Mikaela Goodall | 12 | Laurel Todd | 10 | Emily Walker | 9 | | |
| April Wright | 11 | Lulu Pruden | 10 | Kristina Akmulina | 9 | | |
| Daniel Santos | 11 | Mystie Johnson | 10 | Madyson Knepper | 9 | | |
| Evan Bedney | 11 | Thalia Garcia | 10 | Morgan Williams | 9 | | |

ESTACADA

RIOT

Estacada High School

Location Estacada
Classification 4A
Colors Green, White
Superintendent Ryan Carpenter
Principal Bill Blevins
Athletic Director Trevor Syring
Activities Director Heather Treanor
Head Coach Chelsea Blackmon
Assistant Coach Charlon Blackmon
Routine Theme Castle
Music Selection "Castle", Halsey



| | | | | | |
|---------------------|----|--------------------|----|--------------|---|
| C Ciara Schwimmer | 12 | Alicia James | 10 | Tori Purcell | 9 |
| Jana Wuertz | 12 | Hailey Herman | 10 | | |
| Jeffrey Lippert | 12 | Lily Belcher-McCoy | 9 | | |
| C Kourtney Sandidge | 12 | Lizzie Smith | 9 | | |
| C Sarah Irelan | 12 | Raven Yoder | 9 | | |
| Aja Williams | 10 | Samantha Warren | 9 | | |

GLADSTONE

GLADETTES

Gladstone High School

Location Gladstone
Classification 4A
Colors Beaver Orange, Black
Superintendent Bob Stewart
Principal Kevin Taylor
Athletic Director Ted Yates
Activities Director Patti Alexander
Head Coach Denise Harris
Assistant Coaches Michelle Nhem
 Jamee Zerba
 Robin Meier
Choreographer
Routine Theme Carpe Diem - Seize the Day!
Music Selection "Suns and Stars", Really Slow Motion



'17-'18 GLADSTONE gladettes

| | | | | | | | |
|-----------------|----|------------------|----|-----------------|----|---------------|----|
| Amanda Ward | 12 | Jasmine Guenther | 11 | Tristan Suskie | 11 | Zoe McCarty | 10 |
| Katie Stalker | 12 | Jennifer Ramirez | 11 | Abby Cole | 10 | Joanna Mitzel | 9 |
| Stephanie Brant | 12 | Joby Perrier | 11 | Arienne Rowland | 10 | | |
| Aleisha Kerr | 11 | Lanie Sticka | 11 | Jenifer Gayner | 10 | | |
| Codie Hart | 11 | Sabrina Ward | 11 | Paige Bruer | 10 | | |
| Evie Skelley | 11 | Sophia Gustafson | 11 | Skye Palacios | 10 | | |

GLENCOE

THE TIDETTES

Glencoe High School

Location Hillsboro
Classification 6A
Colors Crimson, White
Superintendent Mike Scott
Principal Claudia Ruf
Athletic Director Matt York
Activities Director Butch Self
Head Coach Stephanie Weber
Assistant Coaches Jerri Gross
 Erica Lilja
 Stephanie Weber
Choreographer
Routine Theme Discovery
Music Selection "Gravity", Steven Price



| | | | | | |
|--------------------|----|------------------|----|------------|---|
| Hayley Green | 12 | Taylor Pitts | 11 | Laura Mack | 9 |
| C Jenna LuBean | 12 | Maleah Bryant | 10 | | |
| C Macee Harrington | 12 | Elie Robertson | 9 | | |
| C Machesney Miller | 12 | Grace Frey | 9 | | |
| Gabi Zemite | 11 | Guadalupe Flores | 9 | | |
| Sofia Guglielmi | 11 | Ira Belyaeva | 9 | | |

GRANT

GENDRILLS

Grant High School

Location Portland
Classification 6A
Colors Blue, Gray
Principal Carol Campbell
Athletic Director Ray Byzewski
Head Coach Breanna Williams
Assistant Coach Kali Capps
Team Manager Sasha Nutcher
Choreographer Breanna Williams
Routine Theme In A Kingdom of Eternal Countenance
Music Selection "We All Complete", Rachel Portman



| | | | | | | | | | |
|-------------------|----|-----------------------|----|-------------------------|----|--------------------|----|------------------|---|
| C Kelly Gunderson | 12 | Madeline Purkey | 11 | Chloe Ford | 10 | Taydem Baisley | 10 | Ella Sturm | 9 |
| C Sarah Anderson | 12 | Natasha Roth | 11 | Grace Oliver | 10 | Violet Wiand | 10 | Livi Buck | 9 |
| Sasha Nutcher | 12 | Priya Boucher-Colbert | 11 | Izadora Nowina-Sapinski | 10 | Abby Franklin | 9 | Marina Thompson | 9 |
| C Sophia Switzer | 12 | Sam Carey | 11 | Olivia Putnam | 10 | Alivia Perry | 9 | Mattie Dodge | 9 |
| Bridget Salada | 11 | Sharon Sherpa | 11 | Rehanna Ali | 10 | Annabella Holmlund | 9 | Sadie McLaughlin | 9 |
| Kyla Sturm | 11 | Ali Woodyard | 10 | Sicily Larkin | 10 | Darcy Haindl | 9 | Soul Filkins | 9 |

GRANT UNION

GOLD

Grant Union High School

Location John Day
Classification 2A
Colors Scarlet, Black, White
Superintendent Curt Shelley
Principal Ryan Gerry
Athletic Director Jason Miller
Head Coach Kattie Piazza
Team Manager Celine Hicks
Routine Theme Rise
Music Selection "Rise", Katy Perry



| | | | | | |
|------------------|----|-----------------|---|-----------|---|
| Ali Chobo | 11 | Clara Carr | 9 | Rhea Mead | 9 |
| Andrea Comer | 11 | Kamisha Moles | 9 | | |
| Nikki Jones | 11 | Kayla Callighen | 9 | | |
| Emilie Updegrave | 10 | Leah Comer | 9 | | |
| Shanniyah Hall | 10 | Madison Spencer | 9 | | |
| Brianna Majors | 9 | Mercedes Locke | 9 | | |

GRESHAM

RHYTHMETTES

Gresham High School

Location Gresham
Classification 6A
Colors Blue, White
Superintendent Dr. Katrise Perera
Principal Michael Schaefer
Athletic Director Todd Nagele
Activities Director Ty Gonrowski
Head Coach Jennifer Wilson
Assistant Coaches Meredith Holman, Mary Ellen Cook, Megan Robertson, Micah Himes, Kelsea Hutchins
Routine Theme Speak Your Truth
Music Selection "Breath", Ex Makina



| | | | | | | | | | |
|------------------|----|------------------|----|------------------|----|--------------------|----|-----------------|---|
| Alexia Lua | 12 | Elly White | 11 | Tieanti Aparicio | 11 | Makayla Moss | 10 | Natalie Herrada | 9 |
| Cambrae Rothwell | 12 | Estella Ortiz | 11 | Chloe Cummins | 10 | Mariah Garcia | 10 | Olivia Howard | 9 |
| C Emma Loftin | 12 | Kaila Andrehsen | 11 | Delaney Lasher | 10 | Tamara Rothwell | 10 | Sophie Harrison | 9 |
| C Jade Martinez | 12 | Mercedes Ahumada | 11 | Jasmine Silva | 10 | Catherine Campbell | 9 | | |
| C Kendra Unanue | 12 | Natalie Grigsby | 11 | Kelsey Rowe | 10 | Eden Miller | 9 | | |
| Camille Baptista | 11 | Savannah Smith | 11 | Lizbeth Delgado | 10 | Gianna McDonald | 9 | | |

HERMISTON

STARDUST DANCE TEAM

Hermiston High School

Location Hermiston
Classification 5A
Colors Purple, Vegas Gold

Superintendent Dr. Fred Maiocco
Principal Tom Spoo
Athletic Director Larry Usher

Head Coach Ashley Seibel
Assistant Coaches Austinn Black
 Jake Royer
 Tori Espinosa
 Susan Stephens

Choreographers Ashley Seibel
 Susan Stephens

Routine Theme Lone Wolf
Music Selection "Lone Wolf", Fearless Motivation



| | | | | | |
|--------------------------|----|----------------|----|-----------|---|
| Dhriti Sanghavi | 12 | Madison Myers | 10 | Vee Mecum | 9 |
| C Jancee Skinner | 12 | Abby Remmer | 9 | | |
| C Makena Royer | 12 | Daytona Tracy | 9 | | |
| Mayleni Delapaz Sanguino | 12 | Ellie Ernst | 9 | | |
| Madison Nichols | 11 | Hayley Seibel | 9 | | |
| Logan Howard | 10 | Savannah Evans | 9 | | |

LAKE OSWEGO

LAKER DANCERS

Lake Oswego High School

Location Lake Oswego
Classification 6A
Colors Navy, White

Superintendent Dr. Heather Beck
Principal Rollin Dickinson
Athletic Director Brigham Baker
Activities Director Chris Hill

Head Coaches Kendall Shepherd
 Hayley DuLong

Choreographers Shelby Cairncross
 Cortney Colich

Routine Theme Stay
Music Selection "And I'm Telling You I'm Not Going", Jennifer Hudson



| | | | | | | | |
|---------------------|----|------------------|----|----------------|----|-----------------|---|
| C Erin Xu | 12 | C Sophia Mantell | 12 | Grace Freemont | 10 | Isobel Kremer | 9 |
| C Kalanie Thomas | 12 | Dana Vlasisavich | 11 | Jordan Ruttert | 10 | Kyra Crawford | 9 |
| C Kylie Lewis | 12 | Grace Cook | 11 | Madison Hirsch | 10 | Olivia Kovac | 9 |
| C Leslie Mathany | 12 | Olivia Colburn | 11 | Sabrina Safari | 10 | Shannon DeRaeve | 9 |
| C Olivia Gaussoin | 12 | Caroline Cohen | 10 | Sayeh Sanaee | 10 | Sophie Brazier | 9 |
| C Siri Breckenridge | 12 | Devi Charlton | 10 | Becki Bachleda | 9 | | |

LAKERIDGE

PACER DANCE TEAM

Lakeridge High School

Location Lake Oswego
Classification 6A
Colors Columbia Blue, Vegas Gold

Superintendent Dr. Heather Beck
Principal Dr. Jennifer Schiele
Athletic Director Terry Moore
Activities Director Terry Moore

Head Coach Emily Armstrong
Choreographers Ryan Sanford
 Johnathan Sanford

Routine Theme Your Mountain is Waiting...
Music Selection "London 1856", Walid Feghali



| | | | | | | | |
|-------------------------|----|-------------------|----|-------------------|----|--------------|---|
| Arianna Spring | 12 | Reagan Holmes | 12 | Trieste Stephens | 11 | Alex Hammond | 9 |
| C Jenna-Grace Millionis | 12 | C Savannah Steele | 12 | Allie Coder | 10 | Ali Hoevet | 9 |
| Kaylee Smith | 12 | C Sophie Daskalos | 12 | Jade Morgan | 10 | Grace Engel | 9 |
| Lauren Jacobs | 12 | Amie Zawadzki | 11 | Jenny Rodas-Hills | 10 | Marie Onishi | 9 |
| Lily Kuehl | 12 | Lauren Richards | 11 | Malena Newland | 10 | | |
| Mallory Spring | 12 | Morgan Boyd | 11 | Tea Shatzer | 10 | | |

LEBANON

EXPLOSION DANCE TEAM

Lebanon High School

Location Lebanon
Classification 5A
Colors Red, Royal Blue

Superintendent Dr. Rob Hess
Principal Brad Shreve
Athletic Director Kraig Hoene
Activities Director Nancy Bauer

Head Coaches Megan Phillips
 Megan Sharp

Assistant Coach April Phillips
Choreographer Megan SHarp

Routine Theme Let your light shine
Music Selection "Lights", Melanie Martinez, Ellie Goulding



| | | | | | | | | | |
|------------------|----|-----------------|----|------------------|----|---------------|----|--------------|---|
| Emily Funk | 12 | Taylor Grizzle | 12 | Jazmin Muses | 11 | Zach Berg | 11 | Jayden Hayes | 9 |
| C Emily Jensen | 12 | Trinity Pense | 12 | Madeline Harvey | 11 | Emilee Cole | 10 | Macy Allen | 9 |
| Isabella Miller | 12 | Allie Johnson | 11 | C Paige McGuire | 11 | Maddie Carver | 10 | | |
| C Katy Parrish | 12 | Angelykah Light | 11 | Ruby Brewer | 11 | Alyssa Riley | 9 | | |
| Marisela Saldana | 12 | Fatima Guzman | 11 | Silvia Benvenuti | 11 | Danyel Davis | 9 | | |
| Sam Simmons | 12 | C Hanna Davis | 11 | Trinity Immel | 11 | Emma Williams | 9 | | |

LIBERTY

THE BELLES

Liberty High School

Location Hillsboro
Classification 6A
Colors Navy, Columbia Blue, Vegas Gold

Superintendent Mike Scott
Principal Greg Timmons
Athletic Director Alan Foster
Activities Director Dom Giansante

Head Coach Aliceson Brandt
Assistant Coach Makayla Phillips-Koch
Team Manager Amanda Likes
Choreographer Stephanie Weber

Routine Theme The parable of the stones.
Music Selections "Time", Hans Zimmer
 "Sand", Nathan Lanier
 "Paperman", Christopher Beck



| | | | | | |
|------------------|----|-------------------|----|----------------|---|
| Daisy Sanchez | 12 | Marilyn Hernandez | 10 | Lexie Satter | 9 |
| C Faith McCorkle | 12 | Alexis Hernandez | 9 | Marisol Lomeli | 9 |
| Jasmine Lopez | 11 | Amber Likes | 9 | Zahir Figueroa | 9 |
| C Zoe Uhlig | 11 | Dianna Ferrell | 9 | Zayla Lloyd | 9 |
| Kara Williams | 10 | Elorna Chism | 9 | | |
| Lily Pasion | 10 | Isabelle Houston | 9 | | |

LINCOLN

CARDINALS DANCERS

Lincoln High School

Location Portland
Classification 6A
Colors Red, White

Principal Peyton Chapman
Athletic Director Jessica Russell
Activities Director Sean Mailley

Head Coach Keeley Driscoll
Choreographer Keeley Driscoll

Music Selection "Walk through the Fire (ft. Ruelle)", Zayde Wolf



| | | | | | | | | | | | |
|------------------|----|--------------------|----|------------------|----|------------------------|----|----------------|---|--------------|---|
| Alexis Henrikson | 12 | Alexandra Melville | 11 | Anna Frankhouse | 10 | Naomi Friedman | 10 | Kyla Reynolds | 9 | Sydney Huard | 9 |
| Harley Huard | 12 | Alice Evans | 11 | Cenendra Hancock | 10 | Sydney Jones | 10 | Lainie Hoalst | 9 | | |
| Michaela Yuthas | 12 | Hannah Bradley | 11 | Ella Riis | 10 | Tahel Shai | 10 | Maho Kawai | 9 | | |
| Nao Kawai | 12 | Isabella Rodriguez | 11 | Finella Zeipelt | 10 | Audrey Whiteford-Woods | 9 | Mia Castrina | 9 | | |
| Sadie Schreiter | 12 | Maya Gonzalez | 11 | Josephine Hauck | 10 | Emma Jevack | 9 | Saaya Thompson | 9 | | |
| Sarah Kanzaki | 12 | Maya Pressler | 11 | Layla McGaha | 10 | Kendra Fisher | 9 | Sofia Dominic | 9 | | |

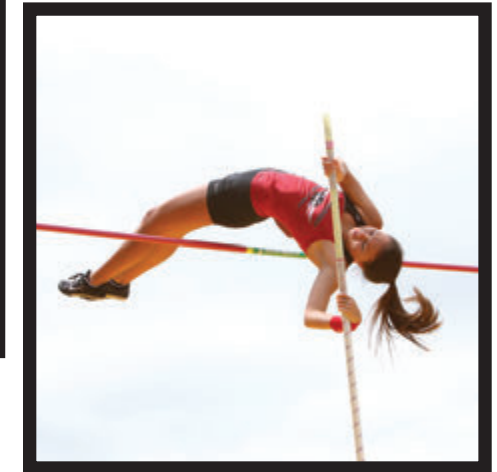
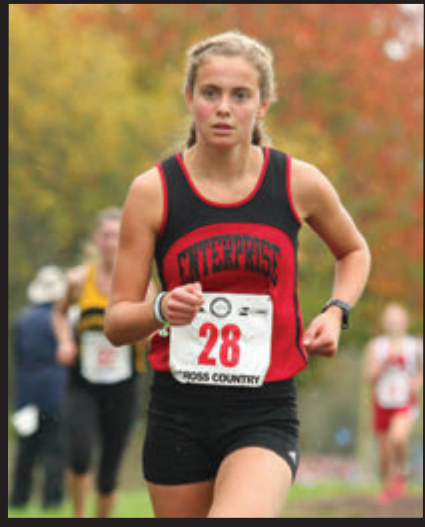
**OSAA REGULAR DISTRICTS
2017-2018
(includes Adjusted 2016-17 ADM)**

| 6A (52) 1258+ | 5A (33) 1257-676 | 4A (40) 675-331 |
|---|---|--|
| 6A-1 - PIL (9) | 5A-1 - Northwest Oregon Conference (8) | 4A-1 - Cowapa League (6) |
| *Benson Techmen 831 | Hillsboro Spartans 1138 | Astoria Fishermen 525 |
| Cleveland Warriors 1463 | La Salle Prep Falcons 697 | Banks Braves 368 |
| Franklin Quakers 1369 | Milwaukie / Arts Academy Mustangs 1182 | Scappoose Indians 730 |
| Grant Generals 1407 | Parkrose Broncos 778 | Seaside Seagulls 377 |
| *Jefferson Democrats 482 | Putnam Kingsmen 1015 | Tillamook Cheesemakers 513 |
| Lincoln Cardinals 1648 | Sandy Pioneers 1281 | Valley Catholic Valiants 382 |
| *Madison Senators 862 | St. Helens Lions 861 | |
| *Roosevelt Roughriders 690 | Wilsonville Wildcats 1063 | 4A-2 - Tri-Valley Conference (6) |
| *Wilson Trojans 1325 | | Corbett Cardinals 394 |
| 6A-2 - Metro League (10) | 5A-2 - Mid-Willamette Conference (8) | Crook County Cowboys 693 |
| Aloha Warriors 1748 | Central Panthers 837 | Estacada Rangers 452 |
| Beaverton Beavers 1635 | Corvallis Spartans 1079 | Gladstone Gladiators 607 |
| Century Jaguars 1433 | Crescent Valley Raiders 921 | Madras White Buffaloes 490 |
| Glencoe Crimston Tide 1407 | Dallas Dragons 820 | Molalla Indians 651 |
| Jesuit Crusaders 1290 | Lebanon Warriors 1137 | |
| Liberty Falcons 1359 | Silverton Foxes 1158 | 4A-3 - Far West League (6) |
| Mountainside Mavericks 800 | South Albany Rebels 1185 | Brookings-Harbor Bruins 445 |
| Southridge Skyhawks 1595 | Woodburn Bulldogs 1105 | Douglas Trojans 335 |
| Sunset Apollos 2213 | | Marshfield Pirates 650 |
| Westview Wildcats 2552 | 5A-3 - Midwestern League (8) | North Bend Bulldogs 702 |
| 6A-3 - Mt. Hood Conference (8) | Ashland Grizzlies 956 | Siuslaw Vikings 376 |
| Barlow Bruins 1510 | Churchill Lancers 1000 | South Umpqua Lancers 331 |
| Centennial Eagles 1449 | Crater Comets 1125 | |
| *Central Catholic Rams 894 | Eagle Point Eagles 903 | 4A-4 - Oregon West Conference (6) |
| Clackamas Cavaliers 2300 | *Marist Catholic Spartans 521 | Cascade Cougars 687 |
| David Douglas Scots 2495 | North Eugene Highlanders 744 | Newport Cubs 515 |
| Gresham Gophers 1292 | Springfield Millers 1107 | North Marion Huskies 486 |
| Oregon City Pioneers 1918 | Thurston Colts 1143 | Philomath Warriors 416 |
| Reynolds Raiders 2183 | | Stayton Eagles 577 |
| 6A-4 - Three Rivers League (9) | 5A-4 - Intermountain Conference (5) | Yamhill-Carlton Tigers 278 |
| Canby Cougars 1314 | **Bend Lava Bears 1558 | |
| Lake Oswego Lakers 1301 | Mountain View Cougars 1282 | 4A-5 - Sky-Em League (6) |
| *Lakeridge Pacers 1092 | Redmond Panthers 844 | Cottage Grove Lions 635 |
| Newberg Tigers 1488 | Ridgeview Ravens 793 | Elmira Falcons 370 |
| Sherwood Bowmen 1597 | **Summit Storm 1428 | Junction City Tigers 476 |
| St. Mary's Academy Blues 1446 | | Sisters Outlaws 371 |
| Tigard Tigers 1813 | 5A-5 - Columbia River Conference (4) | Sutherlin Bulldogs 325 |
| Tualatin Timberwolves 1774 | Hermiston Bulldogs 1349 | Sweet Home Huskies 610 |
| West Linn Lions 1751 | Hood River Valley Eagles 1192 | |
| 6A-5 - Greater Valley Conference (9) | Pendleton Buckaroos 721 | 4A-6 - Skyline Conference (6) |
| Forest Grove Vikings 1623 | The Dalles Riverhawks 729 | Henley Hornets 599 |
| McKay Scots 1876 | | Hidden Valley Mustangs 501 |
| McMinnville Grizzlies 1771 | | Klamath Union Pelicans 515 |
| McNary Celtics 1713 | | Mazama Vikings 572 |
| North Salem Vikings 1389 | | North Valley Knights 458 |
| South Salem Saxons 1637 | | Phoenix Pirates 602 |
| Sprague Olympians 1529 | | |
| West Albany Bulldogs 1253 | | 4A-7 - Greater Oregon League (4) |
| West Salem Titans 1570 | | Baker Bulldogs 408 |
| 6A-6 - Southwest Conference (7) | | La Grande Tigers 626 |
| Grants Pass Cavemen 1450 | | McLoughlin Pioneers 422 |
| North Medford Black Tornado 1442 | | Ontario Tigers 544 |
| Roseburg Indians 1352 | | |
| Sheldon Irish 1365 | | |
| South Eugene Axemen 1371 | | |
| South Medford Panthers 1495 | | |
| Willamette Wolverines 1237 | | |

*school choosing to play above assigned classification

**school moved due to geographical exception

***school moved due to Petition to Play Down



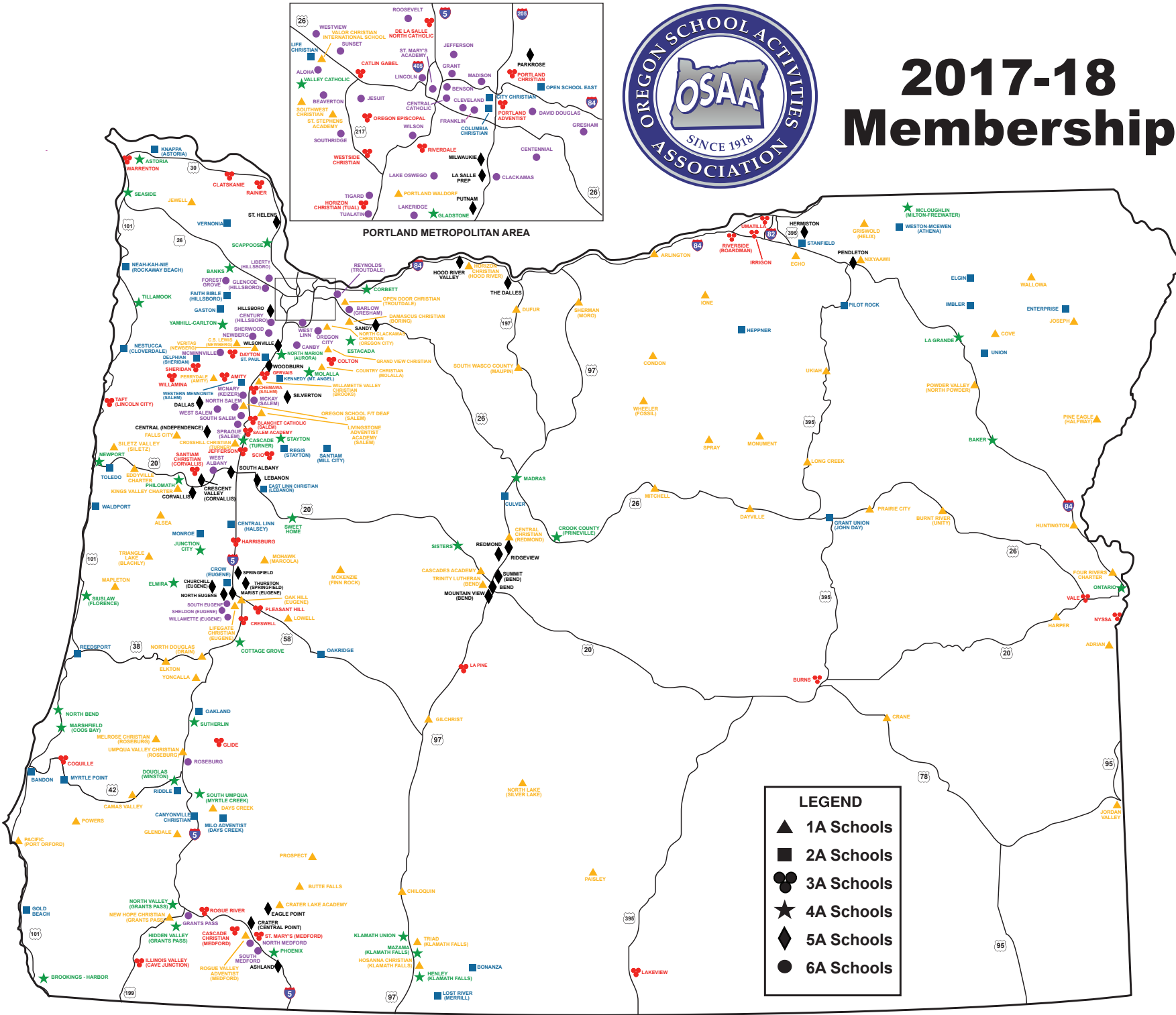
The OSAA Foundation Congratulates all OSAA Participants



To help ensure the Future of these Student Athletes and their Activities,
contact the OSAA Foundation to see how you can help today. www.osaafoundation.org



2017-18 Membership





TEAMWORK. RESPONSIBILITY. ACCOMPLISHMENT.



Whether students are shooting for the hoop, singing in choir, marching in time or aiming for the end zone, they are practicing skills that will serve them well in school, on the job and in life.

Les Schwab is proud of the players and performers of the OSAA. We believe in supporting students as they learn about commitment, hard work and serving the community — values the company believes in. We're glad to be a title sponsor of the OSAA, helping students get the chance to participate in the state playoffs and championships.

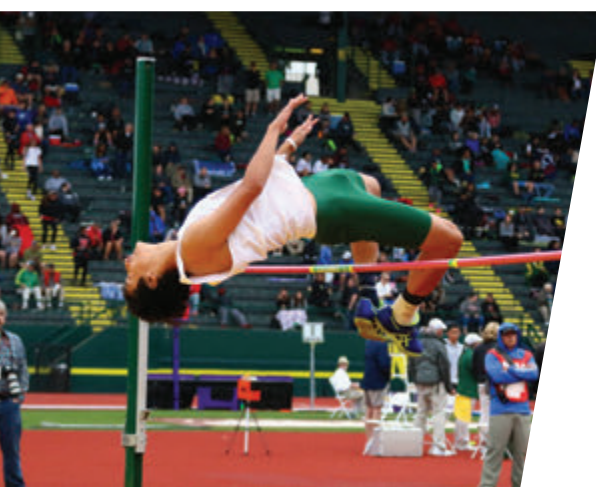


THANK YOU FOR BEING HERE AND FOR SUPPORTING OUR GREAT YOUNG PEOPLE.



Doing the right thing matters.®

www.LesSchwab.com



**OSAA REGULAR DISTRICTS
2017-2018
(includes Adjusted 2016-17 ADM)**

| 3A 330-191 | (41) | 2A 190-90 | (44) | 1A 89- | (81) | 1A (cont.) 89- | |
|--|-------------|---|-------------|--------------------------------------|-------------|---------------------------------------|-------------|
| 3A-1 - Lewis & Clark League | (9) | 2A-1 - Northwest League | (11) | 1A-1 - The Valley 10 League | (10) | 1A-5 - Mountain Valley League | (12) |
| Catlin Gabel Eagles | 307 | City Christian Lions | 147 | Country Christian Cougars | 51 | Butte Falls Loggers | 48 |
| Clatskanie Tigers | 207 | Columbia Christian Knights | 119 | Damascus Christian Eagles | 65 | Cascades Academy Steelhead | 35 |
| De La Salle North Catholic Knights | 318 | Delphian School Dragons | 153 | Grand View Christian Eagles | 56 | Central Christian Tigers | 62 |
| Oregon Episcopal Aardvarks | 313 | Faith Bible Falcons | 135 | North Clackamas Christian Saints | 66 | Chiloquin Panthers | 68 |
| Portland Adventist Cougars | 263 | Gaston Greyhounds | 177 | Open Door Christian Huskies | 54 | Gilchrist Grizzlies | 45 |
| Portland Christian Royals | 175 | Knappa Loggers | 137 | Portland Waldorf Wolfpack | 79 | Hosanna Christian Lions | 78 |
| Rainier Columbians | 271 | Life Christian Lions | 53 | Southwest Christian Wildcats | 56 | North Lake Cowboys | 66 |
| Riverdale Mavericks | 269 | Neah-Kah-Nie Pirates | 202 | St. Stephens Academy | 42 | Paisley Broncos | 31 |
| Warrenton Warriors | 225 | Nestucca Bobcats | 133 | Trinity Academy Thunder | 28 | Prospect Cougars | 48 |
| | | Open School East Goats | 90 | Valor Christian Knights | 29 | Rogue Valley Adventist Red Tail Hawks | 32 |
| | | Vernonia Loggers | 161 | | | Triad Timber Wolves | 61 |
| | | | | | | Trinity Lutheran Saints | 58 |
| 3A-2 - West Valley League | (8) | 2A-2 - Tri-River Conference | (7) | 1A-2 - Casco League | (9) | 1A-6 - Big Sky League | (10) |
| Amity Warriors | 233 | Central Linn Cobras | 173 | C.S. Lewis Watchmen | 31 | Arlington Honkers | 47 |
| Dayton Pirates | 269 | East Linn Christian Eagles | 134 | Crosshill Christian Eagles | 79 | Condon Blue Devils | 36 |
| *Horizon Christian Hawks (TUAL) | 135 | Kennedy Trojans | 162 | Falls City Mountaineers | 53 | Dufur Rangers | 84 |
| Santiam Christian Eagles | 221 | Regis Rams | 132 | Jewell Bluejays | 39 | Horizon Christian Hawks (HR) | 70 |
| Sheridan Spartans | 204 | Santiam Wolverines | 138 | Livingstone Adventist Academy Lions | 61 | Ione Cardinals | 65 |
| ***Taft Tigers | 330 | St. Paul Buckaroos | 85 | Oregon School f/t Deaf Panthers | 51 | Mitchell Loggers | 27 |
| Westside Christian Eagles | 234 | Western Mennonite Pioneers | 125 | Perrydale Pirates | 84 | Sherman Huskies | 74 |
| Willamina Bulldogs | 225 | | | Veritas School Vanguard | 49 | South Wasco County Redsides | 62 |
| | | | | Willamette Valley Christian Warriors | 55 | Spray Eagles | 19 |
| | | | | | | Wheeler Falcons | 14 |
| 3A-3 - PacWest Conference | (7) | 2A-3 - Mountain View Conference | (10) | 1A-3 - Mountain West League | (9) | 1A-7 - Old Oregon League | (8) |
| Blanchet Catholic Cavaliers | 208 | Bonanza Antlers | 120 | Alsea Wolverines | 42 | Cove Leopards | 79 |
| Chemawa Braves | 236 | Canyonville Christian Pilots | 130 | Eddyville Charter Eagles | 48 | Echo Cougars | 77 |
| Colton Vikings | 180 | Crater Lake Academy | 96 | Lowell Devils | 94 | Griswold Grizzlies | 55 |
| Gervais Cougars | 237 | Crow Cougars | 85 | Mapleton Sailors | 36 | Joseph Eagles | 65 |
| Jefferson Lions | 242 | Lost River Raiders | 114 | McKenzie Eagles | 46 | Nixyaawii Eagles | 47 |
| Salem Academy Crusaders | 239 | Milo Adventist Mustangs | 81 | Mohawk Indians | 60 | Pine Eagle Spartans | 47 |
| Scio Loggers | 250 | Monroe Dragons | 115 | Oak Hill School Falcons | 57 | Powder Valley Badgers | 73 |
| | | Oakland Oakers | 174 | Siletz Valley Warriors | 66 | Wallowa Cougars | 51 |
| | | Oakridge Warriors | 127 | Triangle Lake Lakers | 62 | | |
| | | Riddle Irish | 85 | | | | |
| 3A-4 - Mountain Valley Conference | (6) | 2A-4 - Sunset Conference | (6) | 1A-4 - Skyline League | (11) | 1A-8 - High Desert League | (12) |
| Coquille Red Devils | 192 | Bandon Tigers | 189 | Camas Valley Hornets | 56 | Adrian Antelopes | 77 |
| Creswell Bulldogs | 340 | Gold Beach Panthers | 145 | Days Creek Wolves | 71 | Burnt River Bulls | 23 |
| Glide Wildcats | 184 | Myrtle Point Bobcats | 143 | Elkton Elks | 77 | Crane Mustangs | 57 |
| Harrisburg Eagles | 266 | Reedsport Brave | 165 | Glendale Pirates | 77 | Dayville Tigers | 14 |
| ***La Pine Hawks | 334 | Toledo Boomers | 137 | Melrose Christian | 17 | Four Rivers Community School Falcons | 47 |
| Pleasant Hill Billies | 316 | Walldport Irish | 132 | New Hope Christian Warriors | 71 | Harper Hornets | 32 |
| | | | | North Douglas Warriors | 82 | Huntington Locomotives | 24 |
| | | | | Pacific Pirates | 58 | Jordan Valley Mustangs | 31 |
| 3A-5 - Eastern Oregon League | (6) | 2A-5 - Columbia Basin Conference | (5) | Powers Cruisers | 38 | Long Creek Mountaineers | 13 |
| Burns Hilanders | 238 | Culver Bulldogs | 175 | Umpqua Valley Christian Monarchs | 65 | Monument Tigers | 18 |
| Irrigon Knights | 219 | Heppner Mustangs | 93 | Yoncalla Eagles | 72 | Prairie City Panthers | 42 |
| Nyssa Bulldogs | 257 | Pilot Rock Rockets | 92 | | | Ukiah Cougars | 13 |
| Riverside Pirates | 223 | Stanfield Tigers | 126 | | | | |
| Umatilla Vikings | 317 | Weston-McEwen Tiger Scots | 167 | | | | |
| Vale Vikings | 240 | | | | | | |
| | | 2A-6 - Wapiti League | (5) | | | | |
| | | Elgin Huskies | 84 | | | | |
| | | Enterprise Outlaws | 127 | | | | |
| | | Grant Union Prospectors | 154 | | | | |
| | | Imbler Panthers | 87 | | | | |
| | | Union Bobcats | 100 | | | | |
| Full Member Charter Schools | | Full Member School with No Assigned District | | | | | |
| Sheridan Japanese Charter School | 27 | Logos School | 46 | | | | |

*school choosing to play above assigned classification

**school moved due to geographical exception

***school moved due to Petition to Play Down

MARSHFIELD

UPBEATS

Marshfield High School

Location Coos Bay
Classification 4A
Colors Purple, Gold
Superintendent Bryan Trendell
Principal Travis Howard
Athletic Director Greg Mulkey
Activities Director Greg Mulkey
Head Coach Debbie Brown
Assistant Coach Ashlee Everetts
Team Managers Celeste Cardoza
 Heather Hurtt-Eckley
 Cecelia Woods
Choreographer
Routine Theme Make every year a golden year.
Music Selection "Golden Years", David Bowie



| | | | | | |
|--------------------|----|-----------------|----|----------------|---|
| C Bridgett Donovan | 12 | Kira Bjornerud | 11 | Kiya Weatherly | 9 |
| C Kendall Morgan | 12 | Madison Mede | 11 | | |
| Maliyah Miller | 12 | Parker Stocker | 11 | | |
| C Peyton Thomas | 12 | Payton Davidson | 11 | | |
| Callista Martin | 11 | Casey Strine | 10 | | |
| Elise Martin | 11 | McKena Pederson | 10 | | |

MILWAUKIE

THE PONY PRANCERS

Milwaukie High School

Coop: **Milwaukie Academy of the Arts**

Location Milwaukie
Classification 5A
Colors Maroon, Gold
Superintendent Matt Utterback
Principal Mark Pinder
Athletic Director Aaron Moreno
Head Coach Ryan Sanford
Assistant Coaches Jonathan Maulding
 Basha Gitnes
 Mia Castille
Team Manager
Routine Theme The Departure
Music Selection "Do You Realize", Ursine Vulpine



| | | | | | |
|------------------|----|-------------------------|----|--------------------|----|
| C Marissa Kelly | 12 | Aspen Backenstos | 11 | Savanna Beiswanger | 10 |
| C Naomi Tubbs | 12 | Brenna Weiler | 11 | Caitlyne Fincher | 9 |
| C Ocean Benz | 12 | Claudia Finerty | 11 | Katie Hall | 9 |
| C Stevie Schloth | 12 | Isabelle Cachero | 11 | Millie Castillo | 9 |
| C Tessa Reiter | 12 | Leeah McCarthy | 11 | Victoria Gerber | 9 |
| Violet Rodriguez | 12 | Milo Julalak Klangmanee | 11 | | |

NEWBERG

TIGERS DANCE TEAM

Newberg High School

Location Newberg
Classification 6A
Colors Royal Blue, Gold, White
Superintendent Dr. Kym LeBlanc-Esparza
Principal Kyle Laier
Athletic Director Tim Burke
Activities Director Mark Brown
Head Coach Courtney Joel
Assistant Coach Mikaela Schamp
Team Manager Crystal Boles
Choreographer Karley Styles
Routine Theme Just show her a little swing!
Music Selection "Little Swing (ft. Little Sis Nora)", AronChupa



| | | | |
|-------------------|----|------------------------|----|
| Gisselle Sagrero | 12 | Alyssa Johnson | 10 |
| Kailee Aparicio | 12 | Emma Aparicio | 10 |
| Ashley Solis | 11 | Marfrida Alvarez-Rojas | 9 |
| Mackenzie Russell | 11 | Virginia Bradford | 9 |
| Michaela Blair | 11 | | |
| Alahn Ek | 10 | | |

NORTH EUGENE

HIGHLANDERS

North Eugene High School

Location Eugene
Classification 5A
Colors Red, White
Superintendent Dr. Gustavo Balderas
Principal Iton Udosenata
Athletic Director Corey NicholSEN
Head Coach Angie Bunday
Assistant Coach Belle Murray
Choreographer Hillary McClintick
Routine Theme Road Less Traveled
Music Selection "Road Less Traveled", Lauren Alaina



| | | | | | |
|---------------------|----|-------------------|----|-----------------------|----|
| C Hailey Ferro | 12 | Olivia Frost | 11 | Kirsten Ruiz-Blikstad | 10 |
| Jamie Dowell-Hansen | 12 | Stephanie Nelson | 11 | Sequoia Wiseman | 10 |
| C Nichole Carlson | 12 | Yaluni Romo-Ochoa | 11 | Hannah Lawton | 9 |
| Andrea De Leon | 11 | Becky Doyle | 10 | Katie Carey | 9 |
| Jasmine Kite | 11 | Elena Barajas | 10 | Lily Pace | 9 |
| Melia Barbion | 11 | Katie Wood | 10 | Mimi Cajiga-Samano | 9 |

| | |
|-----------------|---|
| Paige Dunnivant | 9 |
| Sara Schultz | 9 |

OREGON CITY

JETS

Oregon City High School

Location Oregon City
Classification 6A
Colors Red, White
Superintendent Larry Didway
Principal Tom Lovell
Athletic Director Andy Jones
Activities Director Kathy Johnson
Head Coach Lisa Ramage
Assistant Coaches Lindsey Mead
 Gail Hoskins
Team Manager Lindsey Ramage
Choreographers Ryan Sanford
 Jonathon Sanford
Routine Theme Land of Confusion
Music Selection "Land of Confusion (Epic Trailer Version)",
 Hidden Citizens



| | | | | | |
|------------------|----|------------------|----|--------------------|---|
| Hailey Alexander | 12 | Hannah Gallagher | 10 | Dixie White | 9 |
| Paloma Bardona | 12 | Kylie Sanders | 10 | Hailey Danielson | 9 |
| Abby Huggett | 10 | Lydia Whyte | 10 | Isa Rust | 9 |
| Averi VanRiper | 10 | Mandi Anderson | 10 | Kailey Trump-Jones | 9 |
| Breanen Kellogg | 10 | Sierra Smith | 10 | Sophia Davis | 9 |
| Brooklynn Smith | 10 | Averie Ensign | 9 | | |

PARKROSE

ELITE

Parkrose High School

Location Portland
Classification 5A
Colors Black, Dark Green, White
Superintendent Dr. Karen Fischer Gray
Principal Molly Ouche
Athletic Director Daunte Gouge
Activities Director Jacquelyn Anderson
Head Coach Danielle Schneider
Assistant Coaches Marline Bueno
 Mary Markham
 Abby Ma
 Linda Cha
 Ashley Cha
Choreographers Abby Ma
 Mary Markham
Routine Theme The Elephant in the Room
Music Selections "The Double Theme (Ver. 1)", Andrew
 Hewitt
 "I Am A Ghost", Andrew Hewitt



| | | | | | |
|--------------------|----|---------------------|----|-----------------|----|
| Aaliyah Manyath | 12 | C Shelby Dunn | 12 | Maria Cab | 11 |
| C Alexys Sieckmann | 12 | Akimi Bledsoe | 11 | Monica Maya | 11 |
| Brianna LeRay | 12 | Amy Bonilla | 11 | Nayely Interian | 11 |
| C Kaitlyn Cha | 12 | Anna Nguyen | 11 | Tam Nguyen | 11 |
| C Kyah Lee | 12 | Arleth Acosta Nunez | 11 | Vivian Hoang | 11 |
| Lilian Vuong | 12 | Dominique Jackson | 11 | Alaina Saechao | 10 |

| | | | | | |
|------------------|----|--------------------|----|---------------------|---|
| Alexis Ebert | 10 | Sam Blaylock | 10 | Yazmin Correa-Ortiz | 9 |
| Amy Garcia | 10 | Stephanie Alvarado | 10 | | |
| Angel Nguyen | 10 | Alexa Ramirez | 9 | | |
| Ashley Jackson | 10 | DeLaney Fischer | 9 | | |
| Christina Orozco | 10 | Elianna Mabaet | 9 | | |
| Rosina Delgado | 10 | Sofia Torres | 9 | | |

PENDLETON

RHYTHMIC MODE

Pendleton High School

Location Pendleton
Classification 5A
Colors Green, Gold

Superintendent Chris Fritsch
Principal Dan Greenough
Athletic Director Troy Jerome
Activities Director Troy Jerome

Head Coach Debbie Kishpaugh
Assistant Coaches Lora Franks
 Jami Niord
 Morgan Hernandez

Team Manager Piper Kishpaugh
Choreographer Cloey Harris
 Debbie Kishpaugh

Routine Theme Awaken the Masters
Music Selection "Code Name Vivaldi", Piano Guys



| | | | | | |
|----------------------|-------------------------|----------------------|--------------------------|------------------------|----------------|
| Caitlin Clough 12 | Pearl McCune 12 | C Giliana Adams 11 | Hannah Rasmussen 10 | Bella Baumgartner 9 | Lily Volger 9 |
| Daria Summerfield 12 | C Terika Christensen 12 | Kelsey Cartmell 11 | Madeline Hales 10 | Chelsie Clough 9 | Mallory Daum 9 |
| Jillian Wilson 12 | Alondra Gomez 11 | C Vanessa Schmidt 11 | Reagan Sokoloski 10 | Cloey Harris 9 | |
| C Kacey Robbins 12 | Brett Rinehart 11 | Bailey Stowers 10 | Rebecca Bower 10 | Cortney Herrera 9 | |
| Kylee Zeckman 12 | Britney Mendel 11 | Brittany Case 10 | Remington Christensen 10 | Elissa Franks 9 | |
| Maria Knibbs 12 | Ellie Lankford 11 | Collin Taber 10 | Abi McFetridge 9 | Gabrielle Fitzmorris 9 | |
| C Paige Skinner 12 | C Emily Gilsdorf 11 | Emily Rinehart 10 | Asha Waine 9 | Kirsten Mendel 9 | |

PHILOMATH

SHINING STARS

Philomath High School

Location Philomath
Classification 4A
Colors Black, Gold

Superintendent Melissa Goff
Principal Brian Flannery
Athletic Director Aaron Schermerhorn
Activities Director Mike Bussard

Head Coach Lori Haslam
Assistant Coach Angela Calder
Team Managers Hiral Patel

Choreographers Megan McGaughy
 Ryan Sanford
 Jonathon Sanford

Routine Theme The Ripple Effect
Music Selections "Bohemia", Mt. Wolf
 "Baba Yetu", Christopher Tin



| | | | | |
|------------------------|-------------------|----------------------|----------------------|-------------------|
| Anita Acevedo 12 | Rhiannon Gudge 11 | Hollyn Eves 10 | Sophia Billings 10 | Rachel Billings 9 |
| Evie Blythe 12 | Ruby Ackermann 11 | Jordyn McMullen 10 | Dara Coon 9 | Ruth Cropp 9 |
| Amanda Ahlestaal 11 | Shayla Vick 11 | Mariah Golston 10 | Katie Champion 9 | |
| Ella Gilbert-Morgan 11 | Annik Bucher 10 | Meg Loyd 10 | Kayley Fredrickson 9 | |
| Karina Cropp 11 | Aubrey Casey 10 | Natasha Leman 10 | Lydia Arthurs 9 | |
| Petra Wenger 11 | Halle Hewitt 10 | Olivia Pappalardo 10 | Mackenzie Mussatti 9 | |

PUTNAM

THE ROYAL CROWNS

Putnam High School

Location Milwaukie
Classification 5A
Colors Green, Gold

Superintendent Matt Utterback
Principal Kathleen Walsh
Athletic Director Jesse Eveland
Activities Director Kim Street

Head Coach Amanda Wilcox
Assistant Coaches Leslie Johnson
 Angie Sharpe
 Karissa Hanno
 Jennifer Franzen
 Mackenzie Johnson

Music Selection "Free Me", Sia



| | | |
|---------------------|----------------------|-----------------|
| C Emma Rope 12 | Mackenzie Strauss 11 | Jordan Hicks 9 |
| C Jordan Drog 12 | McKenzie McHamess 11 | Madison Davis 9 |
| C Katie Heinlein 12 | Tana Manyvong 10 | |
| C Kendra Cruz 12 | Alannah Wilson 9 | |
| Haley Johnston 11 | Becca Clark 9 | |
| Lydia Bilby 11 | Isis Alexander 9 | |

REYNOLDS

RAIDER DANCERS

Reynolds High School

Location Troutdale
Classification 6A
Colors Forest Green, Silver, White

Superintendent Linda Florence
Principal Wade Bakley
Athletic Director Chris Coleman
Activities Director Dee Archie

Head Coach Marlena Nunley
Assistant Coaches Lynette Morales
 Candyce Eaton
 Jamie Arreguin
 Brianna Dillard

Routine Theme Whole Hearted
Music Selections "I Need You", M83
 "My Heart Got Caught on Your Sleeve",
 Lucius



| | | | | | | | | | | | |
|------------------|----|------------------------|----|-------------------------|----|------------------|----|--------------------|---|--------------------|---|
| C Adryana White | 12 | C Raquel Toby | 12 | Jillian Romero | 11 | Jenna Stefanchin | 10 | Cas Schaffer | 9 | Liux Bienh | 9 |
| C Alyssa Paulson | 12 | Rency Reyes | 12 | Lorena Mora | 11 | Nicole Cabrera | 10 | Celina Burns | 9 | Madison Martin | 9 |
| C Ashley Tran | 12 | C Stefany Morales | 12 | Taevalin Sok | 11 | Amy Ross | 9 | Evelyn Mendez-Soto | 9 | Malaysia Jones | 9 |
| C Carly Sorensen | 12 | Ana Oliveros | 11 | Ashlynn Brittain | 10 | Ana Osoria | 9 | Jourdan Barron | 9 | Tatiana Tkacheva | 9 |
| Daniela Hurtado | 12 | Anadalay Carreto-Lopez | 11 | Esmeralda Orozco-Molina | 10 | Angeliyah Vu | 9 | Karen Alfaro | 9 | Yanet Zamora-Lopez | 9 |
| Lidia Yang | 12 | Autumn Battisti | 11 | Hailee Van Noy | 10 | Brooke Levitt | 9 | Katherine Vu | 9 | | |

ROOSEVELT

RIDER ELITE

Roosevelt High School

Location Portland
Classification 6A
Colors Black, Gold

Principal Filip Hristic
Athletic Director Sanjay Bedi
Activities Director Bryndle Rueck

Head Coach Mandy Mucci
Choreographer Jacklyn Mascorro

Routine Theme Rise Up
Music Selections "I'll Find You", Lecrae
 "Rise Up", Andra Day



| | | | | | | | |
|--------------------|----|-----------------|----|-------------------|---|---------------------|---|
| C Erika Palavecino | 12 | Litzy Molina | 11 | Angelique Green | 9 | Latisha Jackson | 9 |
| Ester Pizarro | 12 | Anabel Pedro | 10 | Eleni Maus | 9 | Luvenia Jackson | 9 |
| C Jasmine Gonzales | 12 | Angel Xiong | 10 | Emma Young | 9 | Maria Rojas-Ferrusa | 9 |
| C Kaylee Ixcolin | 12 | Jonica Grover | 10 | Isabela Parkinson | 9 | Mckenna White | 9 |
| Kenia Claros | 12 | Stephanie White | 10 | Krystal Rebollo | 9 | Pasha Cenicerros | 9 |
| Marianita Macario | 12 | Alexia Ibarra | 9 | Lashay Gates | 9 | Sidney Ring | 9 |

SCAPPOOSE

VISION DANCERS

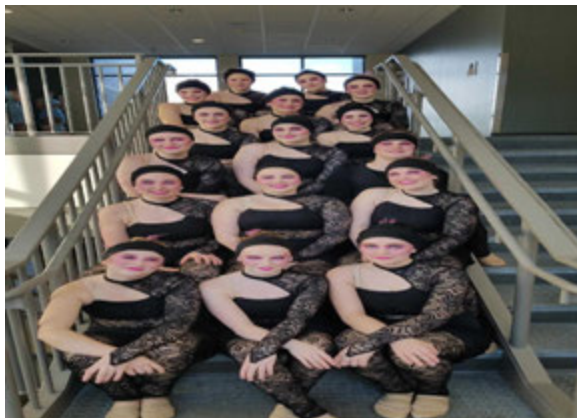
Scappoose High School

Location Scappoose
Classification 4A
Colors Beaver Orange, Black

Superintendent Ron Alley
Principal Jim Jones
Athletic Director Robert Medley
Activities Director Courtney Scott

Head Coach Pamela Didier
Assistant Coaches Ally Britton
 Brittany Hortert
 A.J. Hall
 Afina Arstill
 Cassidy Didier
 Jasmine Schraeder

Routine Theme Anybody Out There?
Music Selections "Is There Anybody Out There?", Pink Floyd
 "Hey You", Pink Floyd



| | | | | | |
|---------------------|----|----------------------|----|---------------|---|
| C Cheyenne Taylor | 12 | McKenzie Worthington | 12 | Haylie Noble | 9 |
| C Daphney Sleightam | 12 | Brianna Western | 11 | Mya Carpenter | 9 |
| Dylan Newcomer | 12 | Danielle Trenkler | 11 | | |
| C Grace Comer | 12 | Hannah Darco | 11 | | |
| C Hana Page | 12 | Reyna Martinez | 11 | | |
| C Katie Sandstrom | 12 | Callie Enos | 10 | | |

SHELDON

COLLEENS

Sheldon High School

Location Eugene
Classification 6A
Colors Green, White, Black

Superintendent Dr. Gustavo Balderas
Principal Robert Bolden
Athletic Director Matt Binkerd
Activities Director Matt Binkerd

Head Coach Hillary McClintick
Assistant Coaches Karsyn Lenn
 Debi Lazarev
 Ellie Combs
 Katie Elden

Choreographer Hillary McClintick

Routine Theme The Greatest Show
Music Selection "The Greatest Show", Hugh Jackman,
 Keala Settle, Zac Efron, Zendaya & The
 Greatest Showman Ensemble



| | | | | | |
|-------------------|----|-------------------|----|-----------------|----|
| Hannah Nason | 12 | Rachel Campbell | 12 | Elleot Gordon | 10 |
| C Jordyn Hamilton | 12 | Shauny Jackson | 12 | Grace Winetrout | 9 |
| Katie Testi | 12 | Annabelle Hall | 11 | Jenna Ward | 9 |
| C Kira Ward | 12 | Claire Greatwood | 11 | Laine Friesen | 9 |
| C Megan Jones | 12 | Isabelle Johnston | 11 | Makayla Dreyer | 9 |
| Natalie White | 12 | Julia Acree | 11 | Meghan McMahan | 9 |

SHERWOOD

ARROWS

Sherwood High School

Location Sherwood
Classification 6A
Colors Crimson, Black, White

Superintendent Dr. Heather H. Cordie
Principal Ken Bell
Athletic Director Randy Ramp
Activities Director Aurora Taylor

Head Coach Rachel Doty
Assistant Coaches Lindsay Walker
 Amanda Hoban
 Kayla Hohman

Team Manager Lindsay Walker
Choreographers Rachel Doty
 Amanda Hoban

Routine Theme Dream
Music Selection "Dream", Imagine Dragons



| | | | | | | | | | |
|-------------------|----|-----------------------|----|-----------------|----|----------------|----|----------------------|---|
| Abrielle Jensen | 12 | Abi Hampton | 11 | Maddie Cluff | 11 | Peyton Everley | 10 | Nichole Duckering | 9 |
| Alex Evernden | 12 | Ariana Black | 11 | Surrayah Baggia | 11 | Sydney Traina | 10 | Samantha Christensen | 9 |
| Grace Daiker | 12 | Bridgette Christensen | 11 | Sydney Davis | 11 | Alaina Flores | 9 | Sophie Robison | 9 |
| Kayla Jones | 12 | Cassidy Olesen | 11 | Allison Thiel | 10 | Barrett Morris | 9 | | |
| C Kaylee Anderson | 12 | Jennifer Christensen | 11 | Chloe Watson | 10 | Cali Ouellette | 9 | | |
| Kyla Thornton | 12 | Lily Starling | 11 | Grace Munn | 10 | Kellyn Lovell | 9 | | |

SILVERTON

FOXES

Silverton High School

Location Silverton
Classification 5A
Colors Silver, Black, Orange

Superintendent Andy Bellando
Principal Wade Lockett
Athletic Director James Rise
Activities Director Heather Bashor

Head Coach Paula Magee
Assistant Coaches Emily Sword
 Alex Reese

Routine Theme In This Moment
Music Selection "I Don't Want to Miss a Thing", Aerosmith



| | | | | | |
|------------------|----|--------------------|----|-----------------------|----|
| Abigail Hulett | 12 | Lisa Kurns | 11 | Sarah Littell | 10 |
| C Brenna Beyer | 12 | Rebekah Huebsch | 11 | Alicea Little | 9 |
| Emily Huyck | 12 | Sarah Zitzelberger | 11 | Claire Crager-Stadeli | 9 |
| Mikayla Hamilton | 12 | Corinne Berning | 10 | Euphrasia Reutov | 9 |
| Natalie Reutov | 12 | Lottie Hamilton | 10 | Orianna Farrell | 9 |
| Hannah Barrett | 11 | Samantha Zurcher | 10 | Sophia Borgstahl | 9 |

SOUTH ALBANY

SOUTHERN BELLES

South Albany High School

Location Albany
Classification 5A
Colors Red, Gray

Superintendent Jim Golden
Principal Brent Belveal
Athletic Director Tony Matta
Activities Director Tony Matta

Head Coach Rachel Girt
Assistant Coaches Katelynn Romviel
 Dennyha Nunez
Team Manager Gillian Rose
Choreographers Karl Mundt
 Kristin Biwan

Routine Theme Invictus
Music Selections "Boadicea", Enya
 "Deep Underwater", Hal Grath
 "Mermaids", Hans Zimmer
 "Planet Earth II Suite", Hans Zimmer



| | | | | | | | |
|------------------|----|--------------|----|-----------------|----|--------------|---|
| Alexia Anaya | 12 | Averie Sayre | 11 | Daphne Gordon | 10 | Megan Montes | 9 |
| Alexsis Kerekes | 12 | Cedar Nelson | 11 | Brianna Benham | 9 | | |
| Anakaren Puentes | 12 | Kalen Sayre | 11 | Brianna Sanchez | 9 | | |
| Cinthya Torres | 12 | Kalynn Smith | 11 | Itzel Ayala | 9 | | |
| Nathali Coyazo | 12 | Mirna Luis | 11 | Katie Tracy | 9 | | |
| Sagi Vidrio | 12 | Sasha Rice | 11 | Llami Garcia | 9 | | |

SOUTH MEDFORD

PANTHER DANCE TEAM

South Medford High School

Location Medford
Classification 6A
Colors Dark Blue, Black, Gray

Superintendent Dr. Brian Shumate
Principal Donnie Frazier
Athletic Director Tim Rupp
Activities Director Kalin Cross

Head Coach Kalin Cross
Assistant Coaches Darby Serr
 Georgia Cole

Routine Theme Control
Music Selection "Control", Halsey



| | | | | | |
|--------------------|----|-------------------|----|--------------|---|
| Alanna McDowell | 12 | C Danika McVarish | 11 | Kayla Nguyen | 9 |
| Elaina Foley | 12 | Joclyn Chase | 10 | | |
| Emma Kiskola | 12 | Sadie Courson | 10 | | |
| Hailey McClenathan | 12 | Abbagayle Long | 9 | | |
| Madi Erickson | 12 | Annabella Bushey | 9 | | |
| C Bianca Salinas | 11 | Carlee Schultz | 9 | | |

SOUTH SALEM

SAXON DANCE CREW

South Salem High School

Location Salem
Classification 6A
Colors Columbia Blue, Scarlet

Superintendent Christy Perry
Principal Lara Tiffin
Athletic Director Brian Armstrong
Activities Director Kathy August

Head Coach McKenzie LeSavage
Choreographer McKenzie LeSavage

Routine Theme Therapy Session
Music Selections "Therapy Session", Nf
 "Wake Up", Nf



| | | | |
|-------------------|----|--------------------|---|
| Sophia Lee | 12 | Gabriela Gutierrez | 9 |
| Cecilia Cooper | 11 | Lynzie Scott | 9 |
| Meredith Hegewald | 11 | Madelyn Hedstrom | 9 |
| Gisela Espinosa | 10 | Mayra Polanco | 9 |
| Taylor Smith | 10 | | |
| Arianna Grant | 9 | | |

SPRAGUE

OLYANNES

Sprague High School

Location Salem
Classification 6A
Colors Orange, Black, Vegas Gold

Superintendent Christy Perry
Principal Craig Swanson
Athletic Director James Weber
Activities Director Robert "Bobby" Schueller

Head Coach Vernita Reyna
Assistant Coaches Emily Salter
 Olivia Zuercher
 Ariel Coker

Team Manager

Routine Theme Smoke and Mirrors
Music Selection "Mind Heist", Zack Hemsey



| | | | | | | | |
|--------------------|----|----------------|----|------------------------|----|-----------------|---|
| C Alyssa Lutz | 12 | Alyssa Harris | 11 | Mackenzie Cooper | 10 | Natalie Venegas | 9 |
| Emily Newton | 12 | Emily Thao | 11 | Allison Clements | 9 | Sonya Frontino | 9 |
| C Madeline Edwards | 12 | Hannah Owen | 11 | Amanda Lutz | 9 | | |
| C Madelyn Hanes | 12 | Cassidy Sedore | 10 | Arella Rodriguez Lentz | 9 | | |
| C Morgan Thomas | 12 | Hannah Li | 10 | Emily Pierson | 9 | | |
| Natasha Shaver | 12 | Jenna Hovet | 10 | Marisa Bradley | 9 | | |

STAYTON

THE HIGHLIGHTS

Stayton High School

Location Stayton
Classification 4A
Colors Navy, Gold

Superintendent Andy Gardner
Principal Alan Kirby
Athletic Director Darren Shryock
Activities Director Laura Warren

Head Coach Robin Meier
Assistant Coaches Alyssa Russel
 April Herrmann
Choreographers Adrienne Sampson
 Robin Meier

Routine Theme Redemption...Eve's Story
Music Selections "Eternal Flame", Audiomachine
 "One Beautiful Evening", Laurie Anderson
 "Pandemic", Really Slow Motion
 "Kari Jobe", The Garden



| | | | | | | | | | | | | | |
|----------------------|----|-------------------|----|-----------------|----|-------------------|----|--------------------|----|------------------|---|---------------|---|
| C Alli Jordan | 12 | C Roni Heagy | 12 | Milee Weitman | 11 | Ashley Kintz | 10 | Kaitlin Sandall | 10 | Kalissa Clark | 9 | Youcelyn Diaz | 9 |
| Alyssa Black | 12 | Sophia Piccirilli | 12 | Savannah Baker | 11 | Brylie DiGesualdo | 10 | Macey Frost | 10 | Karissa Flatman | 9 | | |
| C Breanna Culbertson | 12 | Ariana Aceves | 11 | Silvia Gomez | 11 | Daphne Gaul | 10 | Megan Oliver | 10 | Laura Camacho | 9 | | |
| C Courtney Griffith | 12 | Bailey Fuson | 11 | Valeria Navarro | 11 | Emily Sheehan | 10 | Sarah Lackey | 10 | Maddie Fuson | 9 | | |
| C Erin Ball | 12 | Chloe Stinson | 11 | Abbie Beattie | 10 | Hailey Searles | 10 | Charly Woodley | 9 | Reighlee Allen | 9 | | |
| C Jazlynn Simmons | 12 | Emily Smith | 11 | Abby Schneider | 10 | Jasmin Johnson | 10 | Isabella Ruvalcaba | 9 | Roxanna Trujillo | 9 | | |
| C Nichole Witherell | 12 | Luciana Garcia | 11 | Ashley Bush | 10 | Kaelyn Hill | 10 | Julieta Arreola | 9 | Sierra Baker | 9 | | |

SUNSET

SUNFLARES

Sunset High School

Location Portland
Classification 6A
Colors Purple, White

Principal John Huelskamp
Athletic Director Pete Lukich
Activities Director Tricia Buehl

Head Coach Claire Dye
Assistant Coach Lea Pfau
Choreographers Claire Dye
 Lea Pfau

Routine Theme Next To You
Music Selection "Next To You", Of Rust and Bone



| | | | |
|--------------------|----|--------------------|----|
| Alaiza Montez | 12 | C Kathryn Canfield | 11 |
| Brandi Gillespie | 12 | Victoria Rivera | 11 |
| C Claire McDonnell | 12 | Hailey Yang | 10 |
| Lexus Webb | 12 | Jayna Yoo | 10 |
| C Sarah Higgins | 12 | Nora Giacchi | 10 |
| C Sarah Kurd | 12 | Vora Limpaphayom | 10 |

SWEET HOME

HUSKIETTES

Sweet Home High School

Location Sweet Home
Classification 4A
Colors Green, Gold
Superintendent Tom Yahraes
Principal Ralph Brown
Athletic Director Steve Brown
Activities Director Tomas Rosa
Head Coach Eohe Howerton
Assistant Coaches Ilima Kaaui-Walker
 Kailey Harrington
 Hillary McClintick
 Eohe Howerton
Choreographers
Routine Theme RISE.....LET GO
Music Selection "Rise", Danny Gokey



| | | | |
|---------------|----|-------------------|---|
| Marissa Green | 12 | Jerusalem Jiminez | 9 |
| Hazel Blank | 11 | Kaitlyn Victor | 9 |
| Jayne Malloy | 10 | Kierstan Cockrell | 9 |
| Karlas Perez | 10 | Lexi Yoder | 9 |
| Abby Jernejic | 9 | | |
| Hailey Green | 9 | | |

THURSTON

CABARET

Thurston High School

Location Springfield
Classification 5A
Colors Red, Black, White
Superintendent Dr. Susan Rieke-Smith
Principal Dr. Chad Towle
Athletic Director Justin Starck
Head Coach McKenzie Smith
Assistant Coaches Sheila Lewellen
 Jan Phaigh-McCreary
Routine Theme Unstoppable
Music Selections "Unstoppable", Sia
 "Kick It (Stereoheroes Remix)", Nina Martine



| | | | | | | | |
|-------------------|----|---------------------|----|----------------|----|-----------------------|---|
| C Bianca Newell | 12 | Logan La Meres | 11 | Kenna Young | 10 | Lilly Vogt | 9 |
| C Cera Gay-Conley | 12 | Mariah Hamburg | 11 | Kylie Jewell | 10 | Tessa Douangaphaivong | 9 |
| C Dottie Tucker | 12 | Raeliah Maloy-Lueck | 11 | Miayla Peters | 10 | | |
| C Elease Hunter | 12 | Aly Pollock | 10 | Allison Brooks | 9 | | |
| C Madeleine Smith | 12 | Ellie Thorsby | 10 | Ella Adams | 9 | | |
| Ammie Suttie | 11 | Erica Salinas | 10 | Kayla Murray | 9 | | |

TIGARD

TIGERETTES

Tigard High School

Location Tigard
Classification 6A
Colors Green, Black, White
Superintendent Ernie Brown
Principal Andy Van Fleet
Athletic Director Alan Boschma
Activities Director Mckenzie Coulson
Head Coach Linda Sheron
Assistant Coaches David McCall
 Chase Gourley
 Jordan Daniels
Choreographers Elissa Boudreau
 Chase Gourley
 Elissa Boudreau
Routine Theme Heartbeat
Music Selection "Two Men in Love", Irrepressibles



| | | | | | | | | | |
|----------------|----|--------------------|----|------------------|----|-------------------|----|------------------|---|
| Abby Lam | 12 | Berenice Hernandez | 11 | Lexi Shimanovsky | 11 | Kaylee Eichorn | 10 | Katie Sheasgreen | 9 |
| Ashley Kohlman | 12 | Catherine Park | 11 | Lytic McCallum | 11 | Makena Apau | 10 | Laura Masters | 9 |
| Claire Cordill | 12 | Daisy Madison | 11 | Makenna Thompson | 11 | Volaria Marquez | 10 | Lillian Morris | 9 |
| Maddie Muehe | 12 | Emily Walsdorf | 11 | Natalie Morris | 11 | Ashlynn Miller | 9 | Megan Weinkauf | 9 |
| Madison Heniff | 12 | Kaya Lam | 11 | Alexis Clark | 10 | Aubrey Jordan | 9 | Samantha Vaughn | 9 |
| Abby Mullins | 11 | Lauren Denham | 11 | Hailey Brown | 10 | Caroline Frisires | 9 | | |

TUALATIN

DANCE TEAM

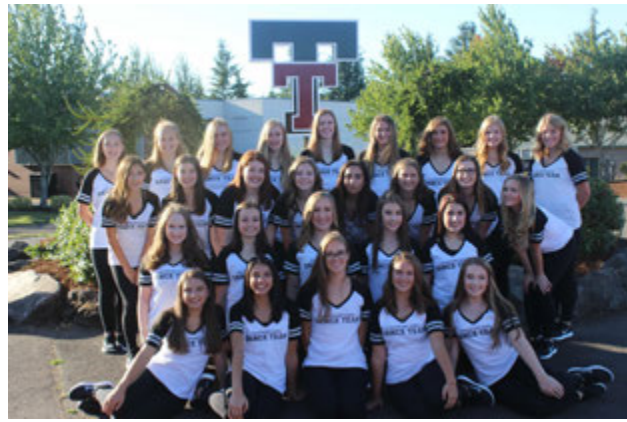
Tualatin High School

Location Tualatin
Classification 6A
Colors Crimson, Black, Silver

Superintendent Ernie Brown
Principal Darin Barnard
Athletic Director Ted Rose
Activities Director Brett Bunke

Head Coach Kelsey Buck
Assistant Coach Sarah Foster

Routine Theme The Stand
Music Selection "This Woman's Work", Maxwell



| | | | | | | | | | |
|-------------------|----|------------------|----|-----------------|----|----------------|----|----------------|---|
| C Ally Fergusson | 12 | Kennedy Stringer | 11 | Annie Pegis | 10 | Lulu Thomas | 10 | Maegan Godfrey | 9 |
| C Camryn Rentfrow | 12 | Libby Farah | 11 | Elise Gregson | 10 | Natalie Unis | 10 | Sarah Birkel | 9 |
| C Chloe Whitt | 12 | Maiya Schulz | 11 | Elisha Meza | 10 | Taylor Wyland | 10 | | |
| C Heather Rosin | 12 | Olivia Sammond | 11 | Jillian Plahn | 10 | Vanessa Fisher | 10 | | |
| Carley Death | 11 | Alessandra Allen | 10 | Katie Ballard | 10 | Abby Fillis | 9 | | |
| Hannah Seits | 11 | Anika Fiske | 10 | Lucy Feuerherdt | 10 | Alexa Shashkov | 9 | | |

VALLEY CATHOLIC

THE CHARISMA

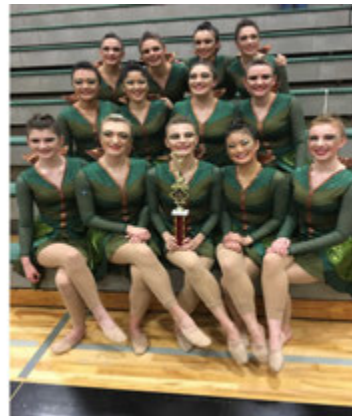
Valley Catholic High School

Location Beaverton
Classification 4A
Colors Royal Blue, White, Gray

Principal Doug Ierardi
Athletic Director Joel Sobotka
Activities Director Allison Gates

Head Coach Jessica Anderson
Assistant Coach Megan Hoffman
Choreographers Jessica Anderson, Megan Hoffman

Routine Theme The Night Orchestra
Music Selections "The Night Sky", Kerry Muzzy
 "The Cello Song", The Piano Guys



| | | | | | |
|-----------------------|----|-------------------|----|---------------|---|
| Carmen Reddick | 12 | Kokoro Yoshioka | 10 | Shannon Maher | 9 |
| Caterina Jardini | 12 | Lauren Wolfe | 10 | | |
| Kyra Stoianteschewsky | 12 | Libby Barkhurst | 10 | | |
| C Ashley Chu | 11 | Maddalene Guthrie | 10 | | |
| Zihan Su | 11 | Parker Layne | 10 | | |
| Haleigh Peralta-Davis | 10 | Lola Bull | 9 | | |

WEST ALBANY

HI-STEPPERS

West Albany High School

Location Albany
Classification 6A
Colors Navy, Vegas Gold

Superintendent Jim Golden
Principal Susie Orsborn
Athletic Director Patrick Richards

Head Coach Lisa Bacus
Assistant Coaches Paige Davenport, Joann Daniels, Haven Barrett

Team Manager Gracie Bakies
Choreographers Haven Barrett, Lisa Bacus

Routine Theme The Sound of Silence
Music Selection "The Sound of Silence", Disturbed



| | | | | | | | |
|--------------------|----|-------------------|----|-----------------|----|--------------------|---|
| Amanda Johnston | 12 | Kylie Hammon | 11 | Jahnay Traynor | 10 | Madie Hollis | 9 |
| C Eelyssa Scofield | 12 | Megan Carroll | 11 | Madison Fraizer | 10 | Rhylee Shuelberger | 9 |
| Frances Reyes | 12 | Mikyla Lyon | 11 | Rylee Domagala | 10 | Sierra Nelson | 9 |
| C Hannah Engom | 12 | Olivia Mathios | 11 | Brianna Hickman | 9 | | |
| Billie Frey | 11 | Rachelle Headrick | 11 | Jenna Nyquist | 9 | | |
| Kieran Predmore | 11 | Bethany Barnnett | 10 | Katie Stopher | 9 | | |

WEST LINN

DEBUTANTES

West Linn High School

Location West Linn
Classification 6A
Colors Green, Yellow

Superintendent Kathy Ludwig
Principal Kevin Mills
Athletic Director Mark Horak

Head Coach Karalee Kylo
Assistant Coaches Julie Leftridge
 Bethany Haqq
 Kaleah Helmke

Team Manager Margaret Johnson
Choreographer

Routine Theme EMERGE
Music Selections "O", Coldplay
 "Hymn for the Weekend", Coldplay



| | | | | | | | | | |
|------------------|----|-----------------|----|---------------------|----|-------------------|----|--------------------|---|
| C Bethany Greeff | 12 | Mackenzie Bezio | 11 | Cecilia Gilburne | 10 | Mackenzie Gorsuch | 10 | Haley Renouf | 9 |
| Emma Williams | 12 | Rosie Dramov | 11 | Emma Nelson | 10 | Megan Stewart | 10 | Jadyn Dewey | 9 |
| C Maddie Kelley | 12 | Tahna Shaaban | 11 | Freya Morel-Seytoux | 10 | Morgan Anderson | 10 | Lauren Hildebrandt | 9 |
| C Olivia Ilas | 12 | Annie McElroy | 10 | Justine Bondwalker | 10 | Paige Rodriguez | 10 | Lindsey Wheeler | 9 |
| Abby Harpole | 11 | Caitie Steinke | 10 | Kaleah Helmke | 10 | Tiffani Beam | 10 | Ruby Brand | 9 |
| Allyson Cannon | 11 | Cara Eisele | 10 | Lauryn Bouyer | 10 | Emily Butts | 9 | Sophia Schwartz | 9 |

WESTVIEW

THE WILDTHINGS

Westview High School

Location Portland
Classification 6A
Colors Navy, Red, Silver

Principal Jon Franco
Athletic Director Troy Christiansen
Activities Director Ben Prange

Head Coach Ashley Quesnoy
Assistant Coaches Olivia Heisen
 Kristen Barton

Routine Theme I was here
Music Selection "I Was Here", Beyonce



| | | | | | | | |
|-----------------|----|----------------|----|-----------------|----|-----------------|---|
| Alex Wold | 12 | Sabrina Wu | 12 | Lily Xia | 10 | Kailen Perry | 9 |
| Alexis Reyes | 12 | Tara Menon | 12 | Maggie Piercey | 10 | Karin Ocheretny | 9 |
| Alison Lu | 12 | Arushi Singhal | 11 | Maria Faria | 10 | Laura Qin | 9 |
| Elizabeth Janes | 12 | Savka Grbic | 11 | Nitzan Ginsburg | 10 | Skyla Imaludin | 9 |
| Lauren Luyten | 12 | Alexis Bunch | 10 | Emily Shen | 9 | | |
| Morgan Eade | 12 | Jessica Goff | 10 | Jessica Truong | 9 | | |

WILLAMETTE

DANCE TEAM

Willamette High School

Location Eugene
Classification 6A
Colors Maroon, White, Black

Superintendent Chris Parra
Principal Mindy LeRoux
Athletic Director Lance Haas
Activities Director Jeanie Hedberg

Head Coach Stephanie Overholt
Assistant Coaches Courtney Reimer
 Alexa Magnuson

Routine Theme 2K Kings
Music Selections "Snap Yo Fingers", T-Pain
 "Lean Back", Ja Rule
 "My Chick Bad", Ludacris
 "Look at Me Now", Chris Brown



| | | | | | |
|--------------------|----|------------------|----|---------------|---|
| C Helen Lucas | 12 | Kynna Mcpherson | 11 | Jordan Briggs | 9 |
| C Makayla McKinney | 12 | Autumn Keirstead | 10 | | |
| Miranda Rothaupt | 12 | Maya Bottensek | 10 | | |
| C Peyton Haring | 12 | Nyah Hammond | 10 | | |
| Jessica Johnson | 11 | Tori Harra | 10 | | |
| Kaiya Neil | 11 | Emma West | 9 | | |

WILSONVILLE

PRIDE

Wilsonville High School

Location Wilsonville
Classification 5A
Colors Navy, Silver

Superintendent Kathy Ludwig
Principal Dan Schumaker
Athletic Director Dennis Burke
Activities Director Mark Sundquist

Head Coach Kristina Fetterman
Assistant Coaches Christie Rivas
 Leisel Stohr
Choreographers Kristina Fetterman
 Leisel Stohr

Routine Theme LOVE
Music Selection "What the World Needs Now Is Love",
 Andra Day



| | | | | | |
|-------------------|----|--------------------|----|---------------|----|
| Ashlyn Bowles | 12 | Brianna Fontes | 10 | Zoey Gray | 10 |
| Alexandra Burkeen | 11 | Jessica Van Wechel | 10 | Audrey Kunde | 9 |
| Isabelle Brooke | 11 | Kendyl Prater | 10 | Emery Borgen | 9 |
| Mariah Sahn | 11 | Mackenzie Harris | 10 | Kenzie Miller | 9 |
| Mia Casselman | 11 | Nila Komp-Mulkey | 10 | Kylie H | 9 |
| Aylenna Busse | 10 | Rachel Walters | 10 | Kylie Hadden | 9 |

| | |
|----------------|---|
| Skyla Summers | 9 |
| Sophie Wheeler | 9 |

WOODBURN

HI-LINERS

Woodburn High School

Location Woodburn
Classification 5A
Colors Royal Blue, White

Superintendent Chuck Ransom
Principal Geri Federico
Athletic Director Chad Waples

Head Coach Cori Mingear
Assistant Coach Catie Mingear
Team Manager Midori Erwin
Choreographers Cori Mingear
 Catie Mingear

Music Selection "El Jarabe Tapatio", Mariachi Vargas de
 Tecalitlan



| | | | | | |
|--------------------------|----|-------------------------|----|----------------------|----|
| Aryel Juarez | 12 | C Zugey Ramirez | 12 | Maggie Estrada | 11 |
| C Flor Campos | 12 | Amaris Velarde-Franco | 11 | Yaritza Velasco | 11 |
| C Lupe Ascencio-Mejia | 12 | Bianca Martinez | 11 | Yorixy Aguiar | 11 |
| C Miguel Gonzalez-Lomeli | 12 | Claritsa Velasco | 11 | Alejandra Maldonado- | 10 |
| Sylvia Santiago | 12 | Isabel Mexicano | 11 | Martinez | 10 |
| Vanessa Martinez | 12 | Janette Delgado-Morales | 11 | Alma Venagas | 10 |
| | | | | Arelly Diaz-Gonzalez | 10 |

| | | | |
|-------------------------|----|------------------------|---|
| Jennifer Cordero | 10 | Jhyzel Olvares-Pena | 9 |
| Piedad Munoz | 10 | Yanet Velazquez-Mendez | 9 |
| Rylie Gubbins | 10 | | |
| Xiclaly Cruz | 10 | | |
| Amberly Martinez-Medina | 9 | | |
| Evelitia Anfilofiev | 9 | | |



**THE NATION'S LEADER IN
LIVE HIGH SCHOOL SPORTS**

Visit www.NFHSnetwork.com To Watch



ALLYSON FELIX

GET MORE FOR YOUR SPORT

NikeFactoryStore

FIND THE NEAREST NIKE LOCATION AT WWW.NIKESTORE.COM

Dance & Drill Coaches Association of Oregon (DDCA) Scholar Athletes 2018

Goals and Objectives with a cumulative Grade Point of 3.5 or more

- Provide a wholesome environment and medium for students in high school to entertain audiences through team dance/drill performances
- To participate in school functions and contribute to the spirit and pride of the high school settings to stress the importance of competition as a means of motivation to excellence and not as an end in itself
- To teach emotional fitness through teamwork
- To instill an appreciation of dance as an art form and encourage students to recognize and appreciate the originality, creativity and variety of movement associated with dance
- To teach cooperation, to practice appropriate sportsmanship, accept and give constructive criticism, and encourage support of team members and other teams, **and to encourage positive parent involvement**
- To teach the value of working together toward common goals through team activities -
- To take pride in one's appearance and cleanliness
- To serve member coaches by supporting and providing a building block for the

| | | | | |
|-----------------------------------|---------------------------|--------------------------|----------------------------|----------------------------|
| <u>Amity</u> | <u>Gresham</u> | Harley Huard | <u>South Albany</u> | <u>West Albany</u> |
| Amy Kraemer | Emma Loftin | Nao Kawai | Alexis Kerekes | Hannah Engom |
| Emily Maples | Kendra Unanue | <u>Parkrose</u> | <u>Tigard</u> | |
| <u>Canby</u> | <u>Lake Oswego</u> | Aaliyah Manylath | Abby Lam | <u>North Eugene</u> |
| Amanda Stephens | Sophia Mantell | <u>Sam Barlow</u> | Ashley Kolman | Hailey Ferro |
| Lauren Gerig | <u>Lakeridge</u> | Aileen Lor | Claire Cordill | Jamie Dowell Hansen |
| <u>Centennial</u> | Arianna Spring | Cara Farnes | Madeleine Muche | |
| Giranna Basile | Jenna Milionis | <u>Sheldon</u> | Madison Heniff | |
| Theresa Mai | Lauren Jacobs | Shauny Jackson | <u>Southridge</u> | |
| <u>Clackamas</u> | Lily Kuehl | Megan Jones | Rowan Frank | |
| Emile Naranjo | Mallory Spring | Jordyn Hamilton | <u>Sunset</u> | |
| Sydney Houston | Savannah Steele | Natalie White | Sarah Higgins | |
| <u>East Linn Christian</u> | Sophie Daskalos | Kira Ward | <u>Thurston</u> | |
| Taylor Grizzle | <u>Lebanon</u> | <u>Sprague</u> | <u>Elise Hunter</u> | |
| <u>Glencoe</u> | Isabella Miller | Alyssa Lutz | Bianca Newell | |
| Jenna LuBean | <u>Lincoln</u> | Emily Newton | Madeleine Smith | |
| | Alexis Henrikson | | Dottie Tucker | |

2016

Denise Harris , Gladstone - 1A - 4A

Debbie Kishpaugh, Pendleton - 5A

Jackie Koegel, Southridge – 6A

Coach of the Year

2017

Debbie Brown, Marshfield - 1 – 4 A

Angie Bunday, North Eugene - 5 A

Hayley Dulong, Lake Oswego – 6A

I AM a Champion.
I wear THE RING.



Jostens is the official ring provider for the Oregon School Activities Association.

Your determination and hard work have made you a champion! Whether you're an individual or a part of a team, you deserve to wear that status proudly.



In addition to the Official OSAA Champion Ring program, Jostens also offers fully customizable rings with endless design options. Please contact your Jostens representative if you are interested in creating a custom team ring.



To order, call 1.800.839.7125 or go to jostens.com/osaa.



OSAA Dance/Drill Championships

State Champions Past 10 Years *(see www.osaa.org/archives for a complete list of all-time state champions)*

| Year | Division | State Champion | Score | Coach | 2 nd Place | Score | Coach | Site |
|----------|-------------------|-----------------|------------------|----------------------------------|-----------------------|-----------------|------------------------------|-----------------------------|
| 2009 | 6A Large | Lincoln | | Sara Anderson | Tigard | | Linda Sheron | Memorial Coliseum, Portland |
| | 6A Small | Sheldon | | Hillary McClintick | Gresham | | Jennifer Wilson | Memorial Coliseum, Portland |
| | 5A Large | Pendleton | | Debbie Kishpaugh | Wilsonville | | Chelle Watt | Memorial Coliseum, Portland |
| | 5A Small | Crook County | | Amanda Estes | Lebanon | | Jessica VandenBos & Alex Cox | Memorial Coliseum, Portland |
| | 4A | Stayton | | Robin Meier | Gladstone | | Denise Harris | Chiles Center, Portland |
| | 3A/2A/1A | Santiam | | Christina Stinson | Valley Catholic | | Jessica Anderson | Chiles Center, Portland |
| | Show | Putnam | | Sara Manougian-Solly | Parkrose | | Shannon Nguyen | Memorial Coliseum, Portland |
| 2010 | 6A Large | Lincoln | | Sara Anderson | Forest Grove | | Josie Fritz | Memorial Coliseum, Portland |
| | 6A Small | Centennial | | Anne Ellett | Gresham | | Jennifer Wilson | Memorial Coliseum, Portland |
| | 5A Large | Pendleton | | Debbie Kishpaugh | Cleveland | | Mallory Hollowell | Memorial Coliseum, Portland |
| | 5A Small | Crook County | | Amanda Estes | Wilsonville | | Chelle Watt | Memorial Coliseum, Portland |
| | 4A | Stayton | | Robin Meier | Phoenix | | Annie Heitmanek | Memorial Coliseum, Portland |
| | 3A/2A/1A | Valley Catholic | | Jessica Anderson | Santiam | | Christina Stinson | Memorial Coliseum, Portland |
| | Show | Parkrose | | Shannon Nguyen | Clackamas | | Jessica Elliott | Memorial Coliseum, Portland |
| 2011 | 6A/5A Large | Pendleton | | Debbie Kishpaugh | Tigard | | Linda Sheron | Memorial Coliseum, Portland |
| | 6A Small | Lake Oswego | | Hayley DuLong & Kendall Shepherd | Gresham | | Jennifer Wilson | Memorial Coliseum, Portland |
| | 5A Small | Milwaukie | | Sherrie Summerville | Silverton | | Paula Magee | Memorial Coliseum, Portland |
| | 4A | Stayton | | Robin Meier | Crook County | | Amanda Estes | Memorial Coliseum, Portland |
| 2012 | 3A/2A/1A | Valley Catholic | | Jessica Anderson | Santiam | | Christina Stinson | Memorial Coliseum, Portland |
| | Show | Parkrose | | Shannon Nguyen | Canby | | Jennifer Chaffee | Memorial Coliseum, Portland |
| | 6A/5A Large | Pendleton | 82.86 | Debbie Kishpaugh | Tigard | 82.14 | Linda Sheron | Memorial Coliseum, Portland |
| | 6A Small | Lake Oswego | 84.31 | Hayley DuLong & Kendall Shepherd | Westview | 81.17 | Alex Bushue | Memorial Coliseum, Portland |
| | 5A Intermediate | Milwaukie | 84.08 | Ryan Sanford | Marshfield | 81.72 | Debbie Brown | Memorial Coliseum, Portland |
| | 5A Small | Dallas | 81.28 | Rayanne Genera | Lebanon | 79.89 | Jessica VandenBos | Memorial Coliseum, Portland |
| | 4A Large | Stayton | 88.53 | Robin Meier | Scappoose | 82.03 | Pamela Didier | Memorial Coliseum, Portland |
| 4A Small | Crook County | 85.31 | Amanda Estes | Astoria | 71.86 | Jeanne Peterson | Memorial Coliseum, Portland | |
| 3A/2A/1A | Valley Catholic | 78.19 | Jessica Anderson | Amity | 69.64 | Syndie Rider | Memorial Coliseum, Portland | |
| Show | Clackamas | 89.35 | Jessica Elliott | Parkrose | 88.89 | Shannon Nguyen | Memorial Coliseum, Portland | |
| 2013 | 6A/5A Large | Pendleton | 86.56 | Debbie Kishpaugh | Gresham | 84.53 | Jennifer Wilson | Memorial Coliseum, Portland |
| | 6A Small | Lake Oswego | 86.22 | Hayley DuLong & Kendall Shepherd | Sunset | 84.58 | Claire Dye | Memorial Coliseum, Portland |
| | 5A Intermediate | Putnam | 84.64 | Sherry Summerville | South Albany | 80.72 | Amanda GaVette | Memorial Coliseum, Portland |
| | 5A Small | Marshfield | 78.53 | Debbie Brown | Milwaukie | 77.94 | Ryan Sanford | Memorial Coliseum, Portland |
| | 4A Large | Stayton | 88.06 | Robin Meier | Scappoose | 83.08 | Pamela Didier | Memorial Coliseum, Portland |
| | 4A Small | Crook County | 85.69 | Amanda Estes | Astoria | 76.03 | Jeanne Peterson | Memorial Coliseum, Portland |
| | 3A/2A/1A | Valley Catholic | 83.97 | Jessica Anderson | Amity | 72.73 | Syndie Rider | Memorial Coliseum, Portland |
| Show | Clackamas | 86.67 | Jessica Son | Parkrose | 85.06 | Shannon Nguyen | Memorial Coliseum, Portland | |
| 2014 | 6A/5A Large | Gresham | 83.61 | Jennifer Wilson | Tigard | 81.31 | Linda Sheron | Memorial Coliseum, Portland |
| | 6A Intermediate | Lake Oswego | 88.17 | Hayley DuLong & Kendall Shepherd | Lakeridge | 85.50 | Brooke Mattern | Memorial Coliseum, Portland |
| | 6A Small | Sunset | 85.44 | Claire Dye | Sheldon | 80.00 | Hillary McClintick | Memorial Coliseum, Portland |
| | 5A Intermediate | South Albany | 83.11 | Amanda GaVette | Putman | 82.67 | Sherry Summerville | Memorial Coliseum, Portland |
| | 5A Small | Silverton | 79.61 | Paula Magee | Hermiston | 77.28 | Ashley Seibel | Memorial Coliseum, Portland |
| | 4A/3A/2A/1A | Stayton | 91.31 | Robin Meier | Valley Catholic | 84.47 | Jessica Anderson | Memorial Coliseum, Portland |
| | Show | Parkrose | 91.81 | Shannon Nguyen | Clackamas | 86.91 | Charmaine Coleman | Memorial Coliseum, Portland |
| 2015 | 6A/5A Large | Gresham | 86.08 | Jennifer Wilson | Milwaukie | 83.44 | Ryan Sanford | Memorial Coliseum, Portland |
| | 6A Intermediate | Lake Oswego | 85.36 | Kendall Shepherd | Sheldon | 82.14 | Hillary McClintick | Memorial Coliseum, Portland |
| | 6A Small | Southridge | 84.25 | Jacie Koegel | Oregon City | 83.69 | Lindsey Andre | Memorial Coliseum, Portland |
| | 5A Intermediate | South Albany | 80.86 | Amanda GaVette | Lebanon | 80.28 | Jessica VandenBos | Memorial Coliseum, Portland |
| | 5A Small | The Dalles | 81.56 | Kristi Maley | Silverton | 80.53 | Paula Magee | Memorial Coliseum, Portland |
| | 4A/3A/2A/1A Large | Valley Catholic | 88.53 | Jessica Anderson | Stayton | 88.08 | Robin Meier | Memorial Coliseum, Portland |
| | 4A/3A/2A/1A Small | Astoria | 75.56 | Jeanne Peterson | Grant Union | 71.50 | Shannon Adair | Memorial Coliseum, Portland |
| Show | Canby | 90.50 | Jennifer Chaffee | Parkrose | 87.92 | Shannon Nguyen | Memorial Coliseum, Portland | |
| 2016 | 6A | Gresham | 86.52 | Jennifer Wilson | Barlow | 85.22 | Erin Reed | Memorial Coliseum, Portland |
| | 5A | Milwaukie | 85.11 | Ryan Sanford | Lebanon | 84.39 | Jessica VandenBos | Memorial Coliseum, Portland |
| | 4A/3A/2A/1A | Valley Catholic | 91.44 | Jessica Anderson | Stayton | 90.83 | Robin Meier | Memorial Coliseum, Portland |
| | Show | Canby | 96.72 | Jennifer Chaffee | Clackamas | 90.17 | Wendi Arant | Memorial Coliseum, Portland |
| 2017 | 6A | Sheldon | 87.53 | Hillary McClintick | Lake Oswego | 87.38 | Kendall Shepherd | Memorial Coliseum, Portland |
| | 5A | South Albany | 82.27 | Amanda GaVette | Pendleton | 80.15 | Debbie Kishpaugh | Memorial Coliseum, Portland |
| | 4A/3A/2A/1A | Stayton | 91.33 | Robin Meier | Valley Catholic | 90.95 | Jessica Anderson | Memorial Coliseum, Portland |
| | Show | Canby | 88.34 | Jennifer Chaffee | Glencoe | 84.04 | Stephanie Harper | Memorial Coliseum, Portland |

2018 Camp Dates



Pacific University

June 29-July 2

July 5-July 8

July 10-13

Thunderbird Dance Camp

www.thunderbirddancecamp.com

TEAMWORK & COMPASSION

COME WITH YOUR HIGH SCHOOL UNIFORM.



This message presented by the Oregon School Activities Association and the Oregon Athletic Directors Association.

Want to be a dance competition judge?

The DDCA & the JA are looking for people with dance, choreography or show design experience to become performance judges.

JA Internship Program information can be found at www.ddca.org under performance membership. Contact Kristen Myers-Coverstone at jainternship@gmail.com for more information.

Other positions include:

IT (digital downloading) - contact jatabulation@gmail.com and
Technical Judges - contact jatechnicaldir@gmail.com





Free Audition Prep Workshop:

Saturday, April 14th 10am-1pm
at Glencoe H.S.

Information and registration online.

Summer Dance Team Camps

West Albany H.S. Commuter:

July 26-28 \$190 per participant

Glencoe H.S. Commuter:

August 2-4 \$190 per participant



nwdanceco



NwDance Camps

ONLINE REGISTRATION AT:
www.nwdanceco.com



• **Hand Crafted Custom-Designed Performance Costumes
& Uniforms Since 1978.**

• **Customizable solo and team costumes now available in our Web Store.
(shop.satinstitches.com)**



Follow us!



Early bird discounts
starting February 2018

satinstitches.com • 763-323-9507
customerservice@satinstitches.com

HER G.P.A. IS EVEN

higher!



GET BETTER GRADES.
PLAY HIGH SCHOOL SPORTS.

#MYREASONWHY

MyReasonWhy.com



“ I bet I can” usually wins that bet.



There are those who wish and those who do. At U.S. Bank, we offer competitive products and services that will help you do. Because when you feel confident in your plans and secure that you don't have to do it alone, the impossible suddenly becomes, well, possible.

PERSONAL | BUSINESS | WEALTH MANAGEMENT



Find your possible at a U.S. Bank branch,
call 800.825.BANK (2265),
or visit usbank.com/possible

the POWER of POSSIBLE.™



Investment products are:

NOT FDIC INSURED | MAY LOSE VALUE | NOT BANK GUARANTEED | NOT A DEPOSIT | NOT INSURED BY ANY FEDERAL GOVERNMENT AGENCY



Credit products offered by U.S. Bank National Association and subject to normal credit approval. Deposit products offered by U.S. Bank National Association. Member FDIC.
©2017 U.S. Bank 170021sm 2/17

"World's Most Ethical Companies" and "Ethisphere" names and marks are registered trademarks of Ethisphere LLC.



Title Sponsor



Title Sponsor



Official Balls



The Oregonian OREGONLIVE
Oregonian Cup



Apparel/Footwear



Retail Sporting Goods



HEALTH
Player of the Game



PACIFIC OFFICE AUTOMATION
— PROBLEM SOLVED —
Radio Network



Academic All-State



Official Beverage



Television/Streaming



School Team Websites



Merchandise Partners



LEGENDARY PIZZA™
Team Resource Partner



Media Partners